

2. (Data and Methods)

1) (Data)

(Asset and Health Dynamics among the Oldest-Old: AHEAD) . AHEAD (National Institute on Aging) ,70 (panel study)

70 . AHEAD () /

65 가
5214
36
가 307
2) (Measurement)
가
가
5 (/)
100 ?”
(Logistic Regression)
0
69
70 100
70 0 100
2/3
가
(National Heart, Lung, and Blood Institute)
BMI(Body Mass Index)가
BMI가 18.5 24.9
BMI가 25 29.9

BMI가 30
(odds ratio)
3. (Study Results)
(ADL) < 1> AHEAD
가 가
Medicaid가 가
HMO Medicare Medicaid . 21% 15% 3~6
가
13%가
(ANOVA) p .001
65 23%
, 19%
가
p .05
(Logistic Regression) 48%
(Logistic Regression) (5~11) 가 ,31%
p .001
(multicollinearity) < 2>
(zero-order odds ratio) Medicaid 21%
11%

1.

(: , %)

	(2,450)	(1,673)	(748)
(Chronic Disease)			
0	25.9	22.0	17.3
1	36.2	38.7	33.4
2	24.4	24.4	28.4
3~6	13.5	14.9	20.9
(Psychological Symptoms)			
0	46.9	46.9	42.4
1~2	34.1	35.2	35.0
3~7	19.0	17.9	22.6
(ADLs)			
0~1	38.8	35.0	22.0
2~4	30.0	33.6	30.1
5~11	31.2	31.4	47.9

(Asset and Health Dynamics Among the Oldest-Old: AHEAD)

\$26,852

\$16,206 (p<0.05).

\$22,164 \$13,680

\$220,464 \$68,000

2.

(: , %)

	(2,450)		(1,673)		(748)	
(Medicaid)	10.6		13.8		20.7	
	12.9		14.1		14.0	
	a ¹⁾	b ²⁾	a ¹⁾	b ²⁾	a ¹⁾	b ²⁾
(Income)	\$26,852	\$16,206	\$26,122	\$16,908	\$22,164	\$13,680
(Net Worth)	\$331,345	\$112,000	\$256,685	\$104,900	\$220,464	\$68,000

: 1) 가 , 2) 가

(Asset and Health Dynamics Among the Oldest-Old: AHEAD)

\$331,345 \$112,000

(p<0.01).

[1]

가

(Odds

ratio) Medicaid (HMO

Medicare Medicaid), , ,

가

가

21%

(odds ratio) 1 , p 0.10

20%

< 3> 5

가

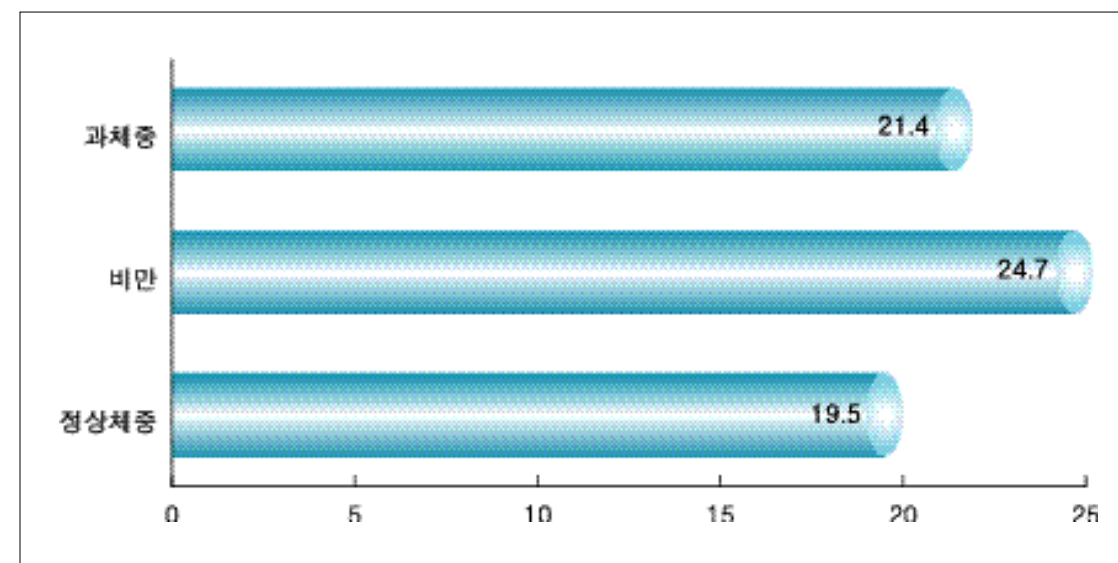
(Logistic Regression)

(zero-order odds ratio)

.001 1

1.

(70~100)



(Asset and Health Dynamics Among the Oldest-Old: AHEAD)

3. (Zero Odds Ratio) 5 (Odds Ratio)

	(Zero Order Odds Ratio)	(Odds Ratio With Controlling Variables)
()	1.14(0.01)	1.13(0.01)
()	1.37(0.12)***	1.23(0.12)*
()	(r)	(r)

: *p<0.1, ***p<0.001, (r) - (reference category)
 () - (standard error), : (Medicaid), HMO (Medicare)

4. (Discussion)

< 2> Medicaid가
 2
 , Medicaid
 가 (HMO Medicaid Medicare)
 . < 1>
 ,
 . < 2>
 가 . (Medicaid
 and Medicare)
 가
 .¹¹⁾
 Medicaid 가
 Medicaid
 Medicare 가
 , 가 (prescribed

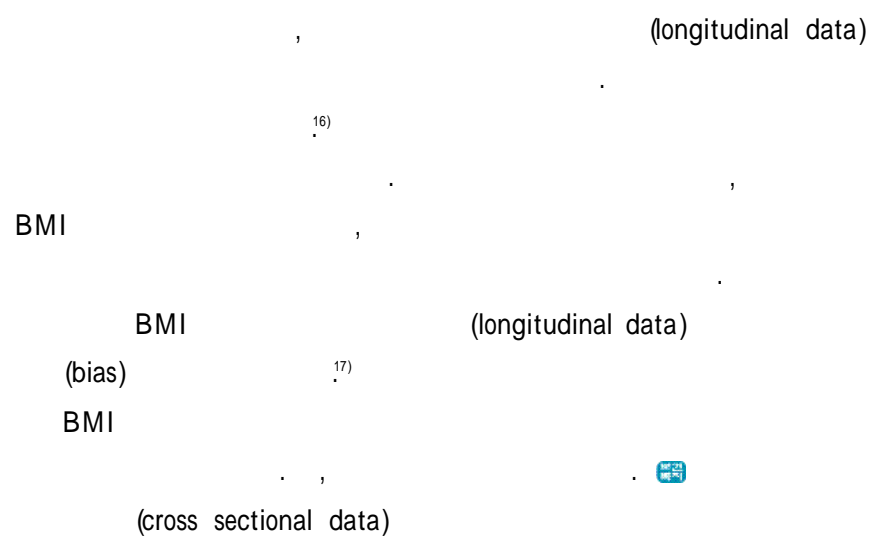
10) Smith, J. "Wealth Inequality Among Older Americans." Journal of Gerontology, 1997, 52(B), pp.74~81.
 11) Goldman, D. P., and Zissimopoulos, J. M., "High Out-Of-Pocket Health Care Spending by the Elderly." Health Affairs, 2003, 22(3), pp.194~202.

medicine) (dental service) (psychological well-being)
 . (deductible),
 (co-payment),
 (uncovered service) .¹⁴⁾

.¹²⁾ ,
 , 가
 , 가 .
 (Center for Disease
 Control and Prevention)
 (Agency for Healthcare Research and
 Quality)
 .¹⁵⁾ ,

(psychological well-being)
 .
 가 (water
 exercise), (swimming),
 (stretching) 가
 .¹³⁾ 가
 ,
 가

12) Crystal, S., Johnson, R. W., Harman, J., Sambamoorthi, U., and Kumar, R., Journal of Gerontology: Social Scienc, 2000, 55B(1), S51~S62.
 13) Cousins, N., Head First. New York: Penguin Books, 1989.
 14) Hayes, D., Ross, C. E., "Body and Mind: The Effect of Exercise, Overweight, and Physical Health on Psychological Well-Being." Journal of Health and Social Behavior, 1986, 27(4), pp.387~400
 15) Agency for Healthcare Research and Quality, Centers for Disease Control and Prevention, U.S. Department of Health and Human Services "Physical Activity and Older Americans: Benefits and Strategies." URL: <http://ahcpr.gov/ppip/activity.htm>, 2002.



16) White, J. V., Parham, J. S. "In Pursuit of a Healthy Weight: What Should We Recommend for Older Adults?"; Healthy Weight Journal, 2002, pp.72 ~ 75.

17) Baumgartner, R. N., Heymsfield, S. B. Heymsfield, and A. F. Roche, "Human Body Composition and the Epidemiology of Chronic Disease," Obesity Research, 1995, 3, pp.73 ~ 95.