

1.

)

2004

56.4%

61.1%

가

(

가

## 2.

가 3/4

가 52 8 678 , 7.8%

가

가

가

가

가 1%

17 1 ( 가 8 6 , 가 8 5 ) . 2004 1 04226

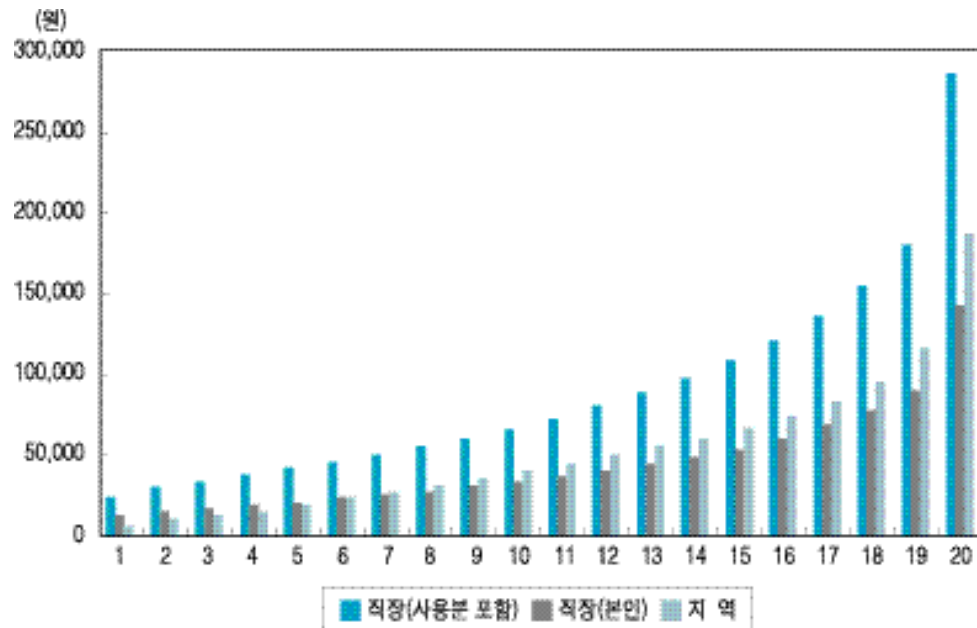
2003 0.3627 가

20

가

가

1. 가 20



## 3.

가 3/4

가 52 8 678 , 7.8%

가

가

가

가

가

가 25% ( 5 )

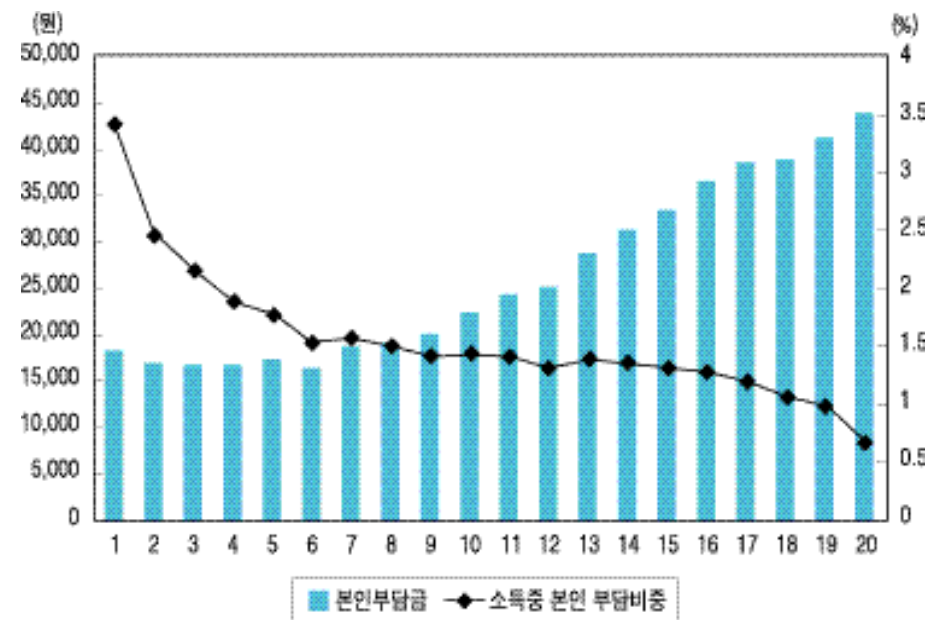
343% , 가

0.65%

54 , 22 2

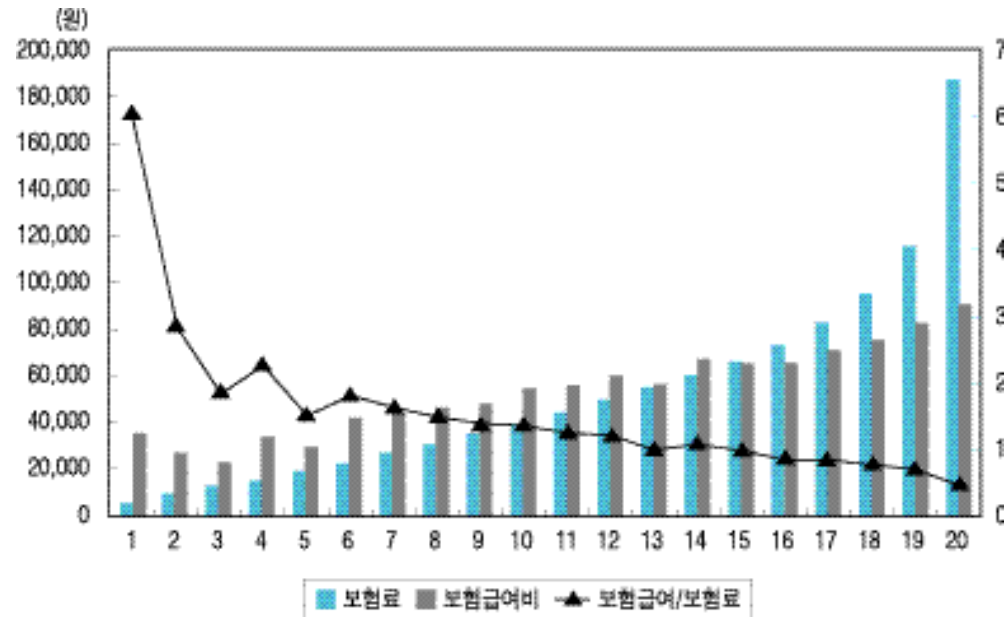
41%

2. 가

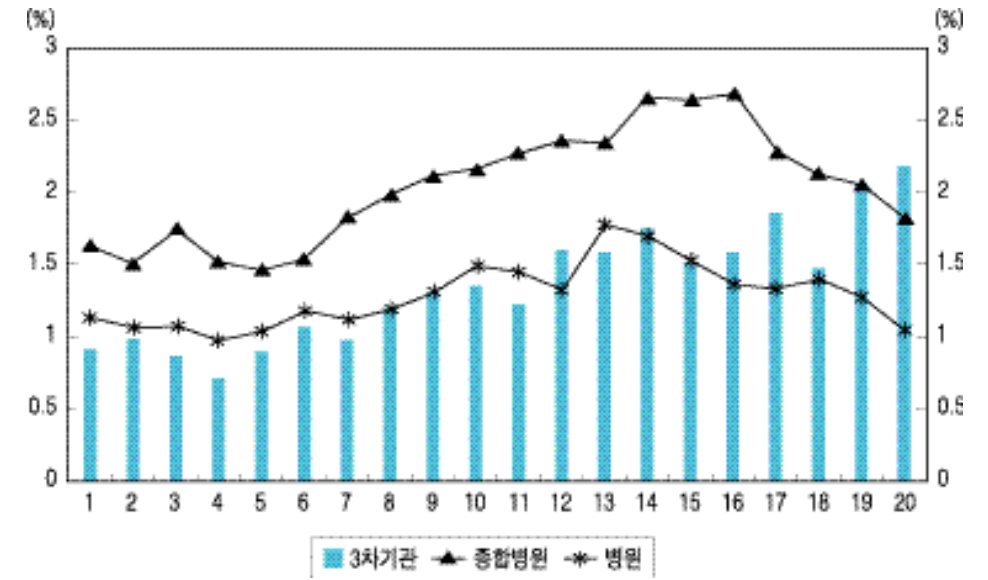




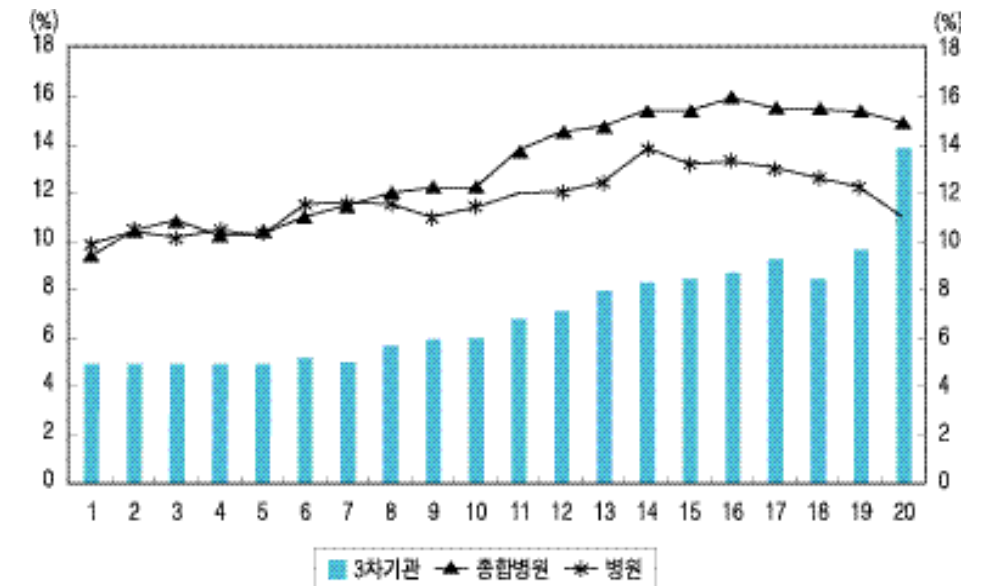
5. 가



6. 가



7. 가



가

가

65~80%

가

가

(20 )

3

가

.3

가

3

가 (30%),

(

).

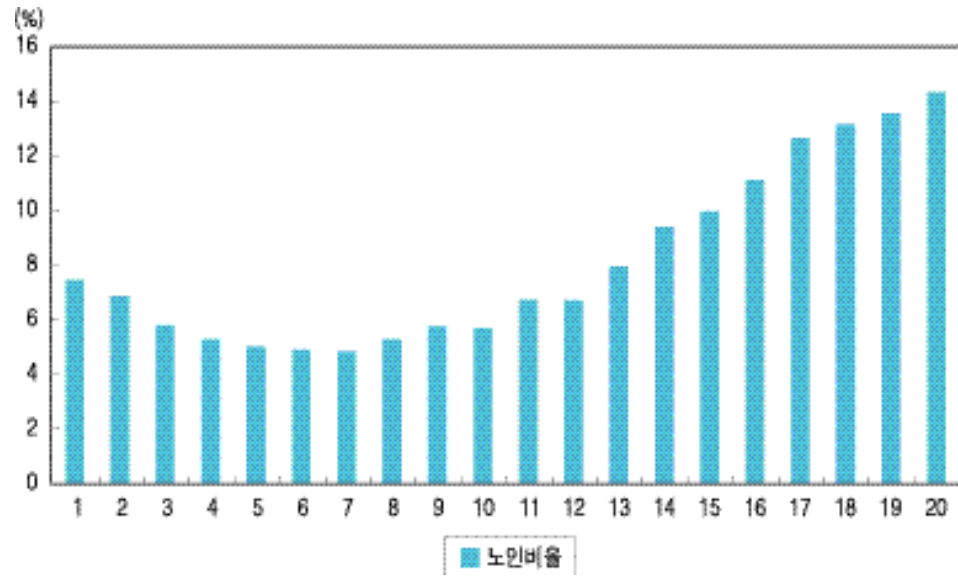
2.5%

가

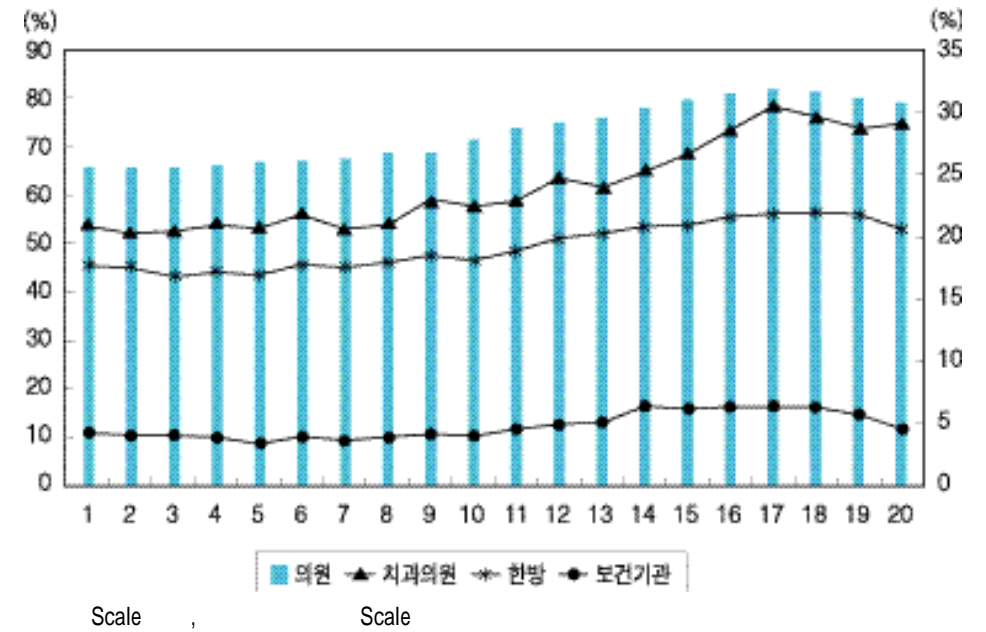
3

가

8. 가



9. 가



60~75%

6.

가

가

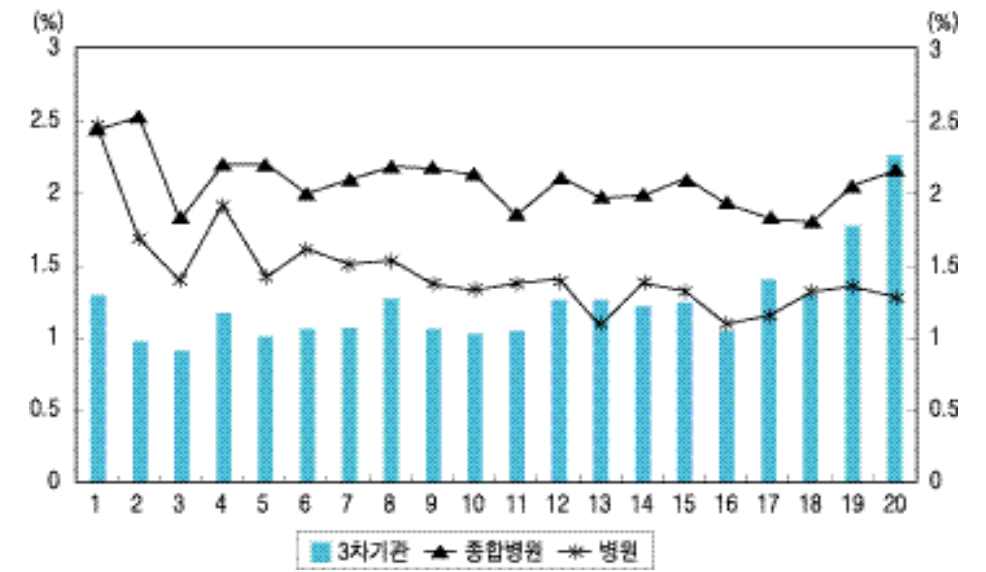
가

( , , ) 가

가

( )

10. 가

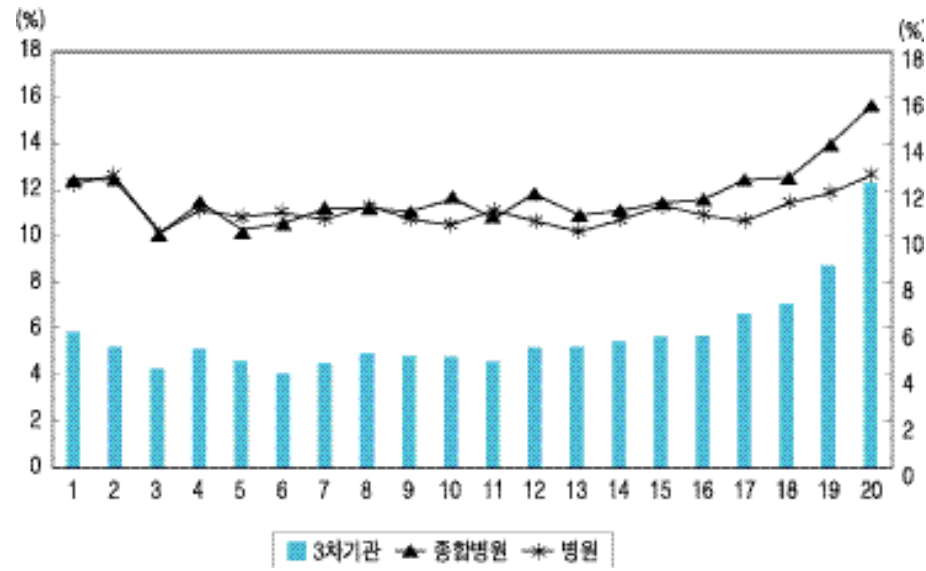


U

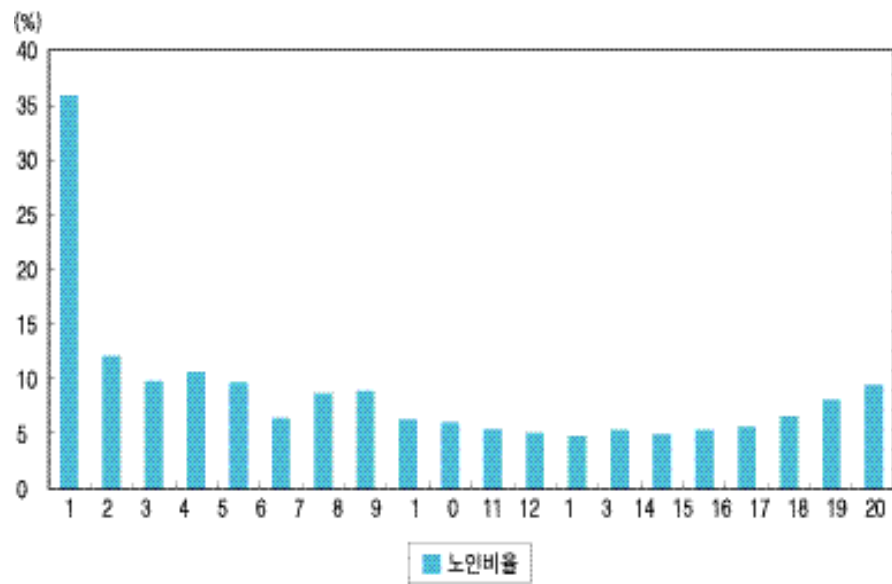
12.6% 가

2.7%

11. 가

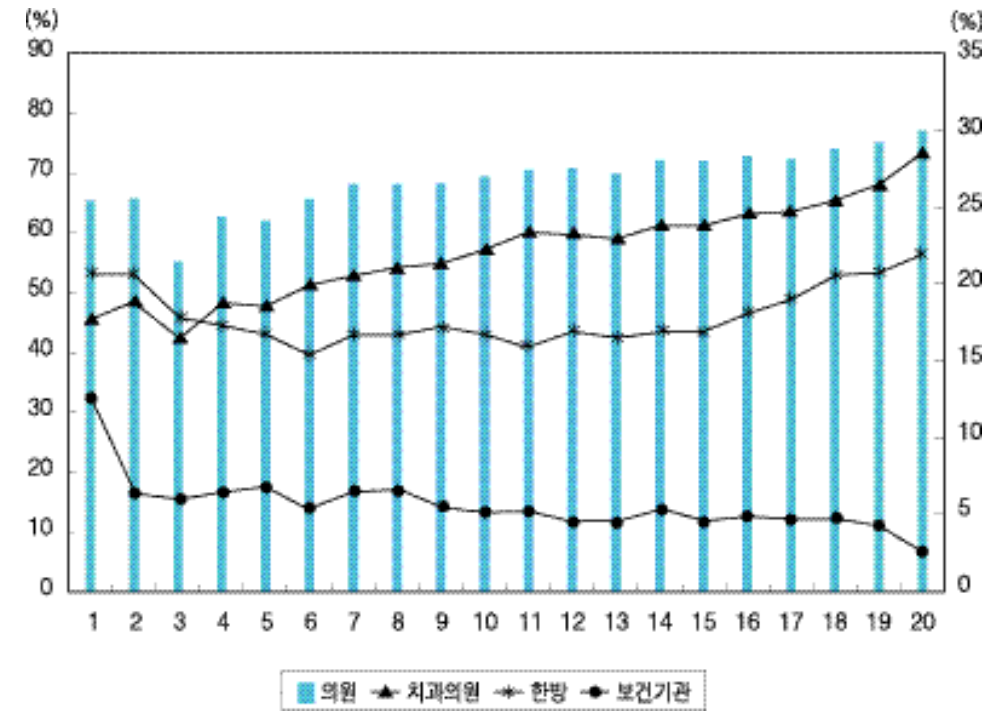


12. 가



가

13. 가



Scale , Scale  
 가  
 ( 6 300 )  
 3  
 가  
 가