



2004

-

-

The 2004 Survey on the Living Profile and Welfare Service Needs of Older Persons: Results and Policy Implications



『2004 』 1994 1998

2000 180  
2004 6 28 ~9 10 (75 ) 9,308가  
가 가 3,278

, ( ,  
, 가 ), ,  
,  
가 , 가  
가

1. 가 180 2004 6 28  
 ~9 10 (75 ) 9,308가  
 3,278

2.

가가  
 가 1)

가 9,308가 가 (65  
 1 가 )가 26.4%  
 1998 가  
 5.5% 가 , 가  
 42.1%, 22.6%  
 19.5%

가 가 24.6%,  
 가 26.6%,  
 가 43.5%, 가 5.4%  
 가 가  
 『2004 46.6% 61.3%  
 1994 55.9%,  
 1998 53.2% 43.3%

1998 가 30.2%  
 가 /  
 가 가 65 가 20.4%  
 10%  
 2000 가 /

1. 가 ( : %)

	가						(가 )
	가	가	가	가	가		
	26.4	24.6	26.6	43.5	5.4	100.0	(2,456)
	22.6	22.1	24.5	47.7	5.7	100.0	(1,689)
	42.1	30.0	31.3	34.0	4.7	100.0	( 767)
1988	20.9	20.1	21.6	53.2	5.1	100.0	(1,958)

30% , 가  
 30% 가 ,  
 가 3/4 1  
 가 , 1  
 36.6%  
 2)

2.

	%		%
	20.4		4.3
	9.0		30.2
	2.5		1.1
가 /	20.4		100.0
	4.7		(735)
	7.4	( )	

3.

( : %)

							1998
		11.4	12.0	10.1	11.7	11.2	12.3
2~3		12.5	13.6	10.2	13.0	12.2	12.1
1		17.2	17.7	16.3	18.2	16.6	16.4
2	1	15.9	15.2	17.4	17.1	15.2	15.8
1		20.3	20.6	19.6	20.5	20.2	20.7
3	1	16.6	14.8	20.3	15.2	17.5	15.7
6	1	3.8	3.8	3.9	3.0	4.3	3.5
1		1.3	1.2	1.5	0.4	1.9	2.7
		1.0	1.1	0.7	0.9	1.0	0.8
		100.0	100.0	100.0	100.0	100.0	100.0
( )		(2,892)	(1,936)	(956)	(1,134)	(1,759)	(2,094)
		7.2	8.0	5.6	6.7	7.5	2.0
2~3		22.5	22.9	21.8	23.3	22.0	20.6
1		31.1	30.6	32.0	34.2	29.1	30.4
2	1	18.7	18.4	19.3	18.2	19.0	21.5
1		11.2	10.6	12.2	9.8	12.0	11.3
3	1	5.9	6.1	5.5	4.9	6.6	8.8
6	1	1.7	1.6	1.7	1.4	1.8	3.0
1		0.6	0.6	0.6	0.5	0.7	0.6
		0.2	0.1	0.5	0.2	0.3	0.6
		1.0	1.0	0.8	0.9	1.0	1.2
		100.0	100.0	100.0	100.0	100.0	100.0
( )		(2,892)	(1,936)	(956)	(1,134)	(1,759)	(2,094)

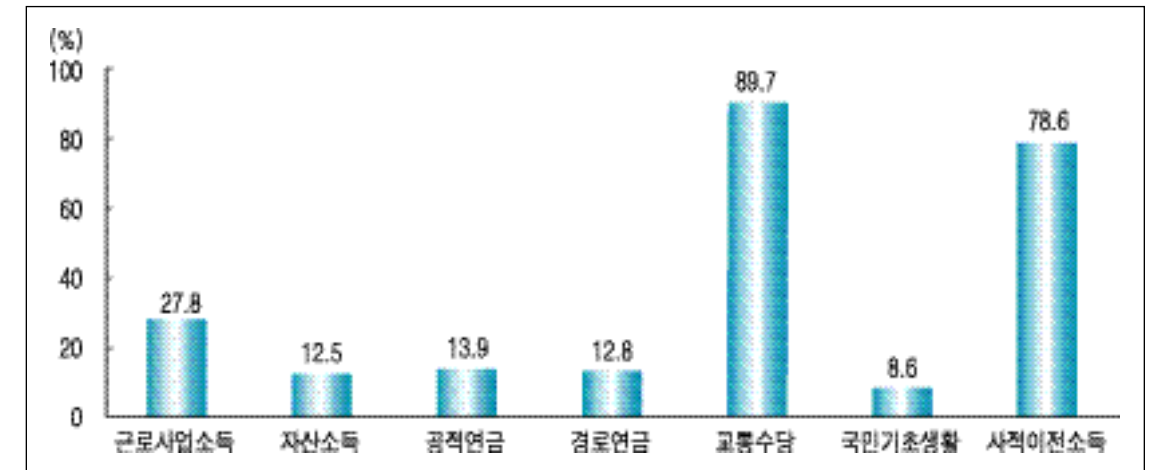
: 1) 3,029 가 1 2,905 , 12 .

(1) 27.8%, 12.5%, 13.9%, 89.7%, 78.6%, 8.6%, 12.8%, 2003 가

1

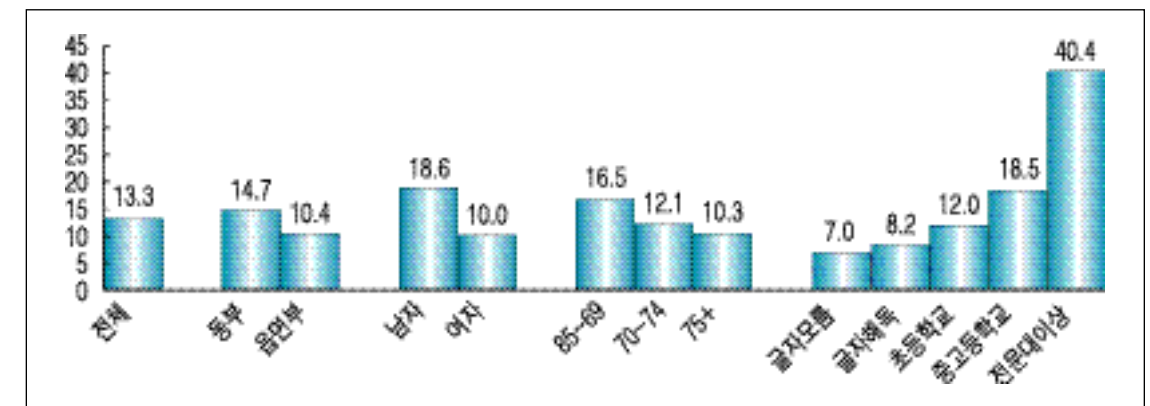
1998

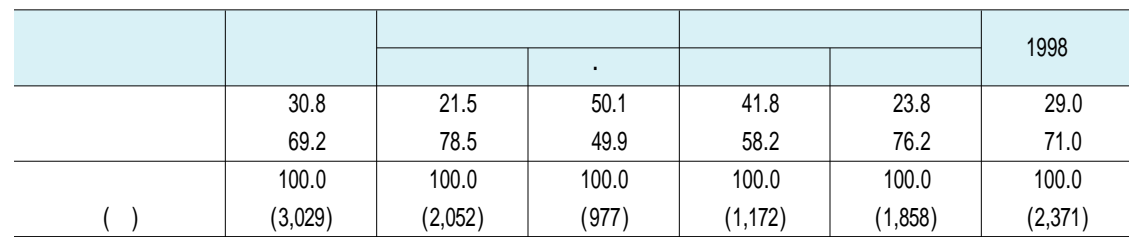
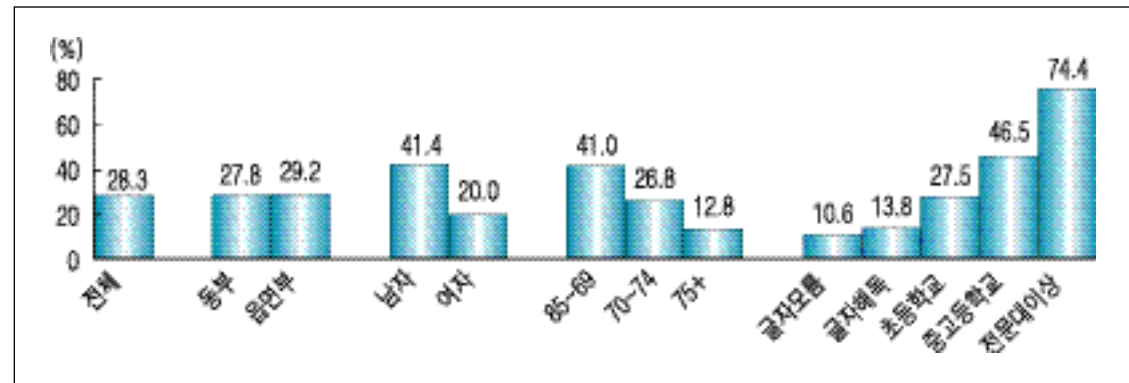
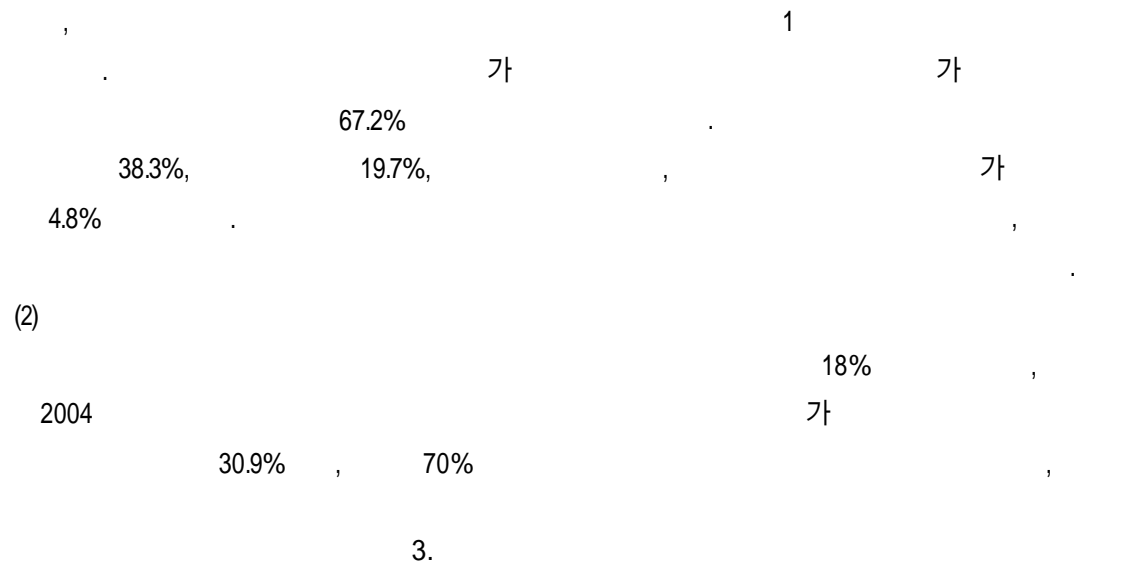
2.8% 가 , 28.3% 가 , 13.3% 가 , 1. 가



2.

( : )

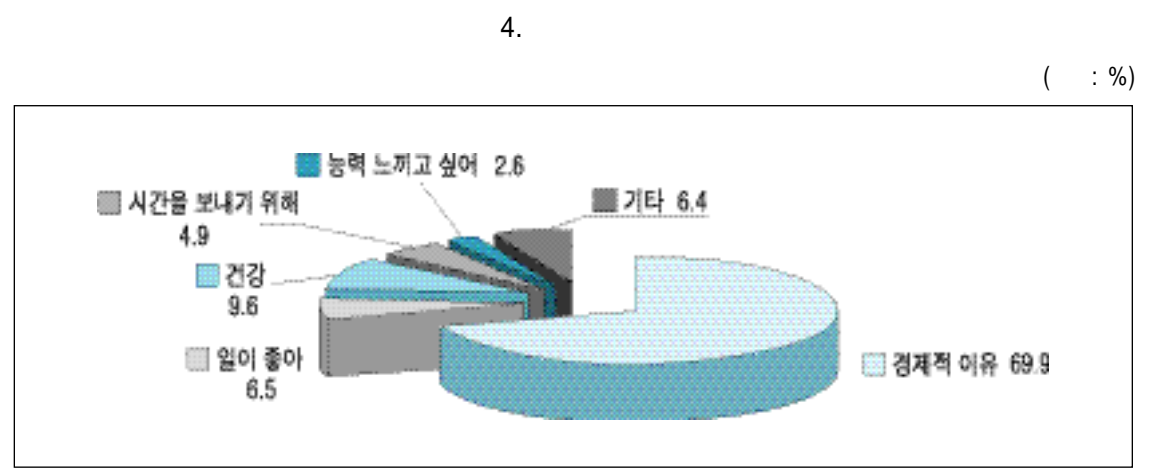




5.

( : %)

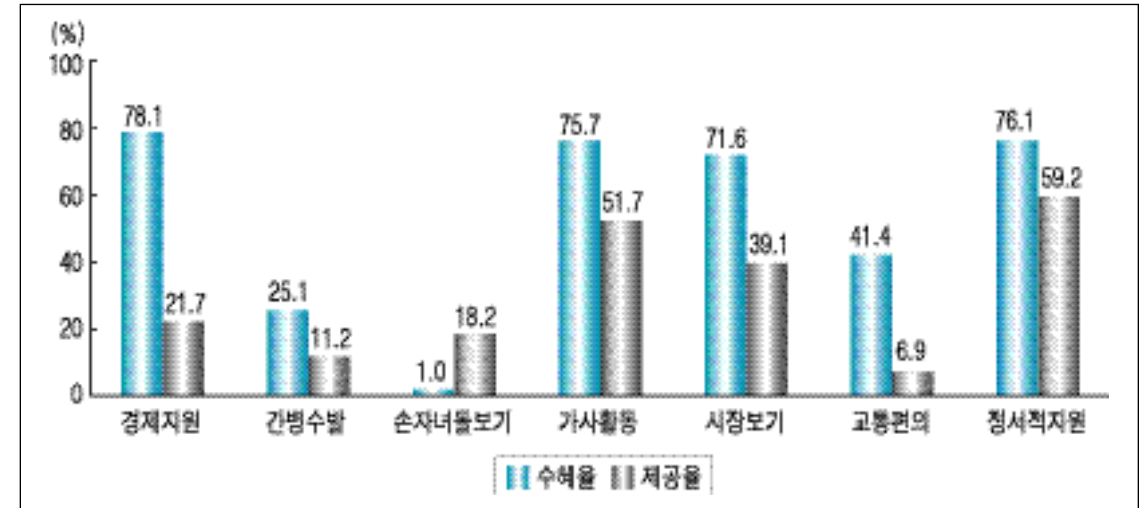
						1998
	1.8	3.2	0.6	3.5	-	2.0
가	1.3	1.8	0.6	2.0	0.2	1.9
가	1.1	1.4	0.8	1.8	0.2	1.1
	0.7	1.1	0.2	0.8	0.5	1.2
	3.4	5.4	1.6	1.6	5.4	8.8
	5.4	7.7	3.5	4.3	6.6	-
	53.9	30.2	75.4	54.9	52.8	60.4
	1.9	3.2	0.8	3.5	0.2	2.7
	2.7	5.0	0.8	4.7	0.5	0.4
	27.8	41.2	15.6	22.7	33.6	21.5
	100.0	100.0	100.0	100.0	100.0	100.0
( )	(931)	(444)	(488)	(488)	(441)	(685)





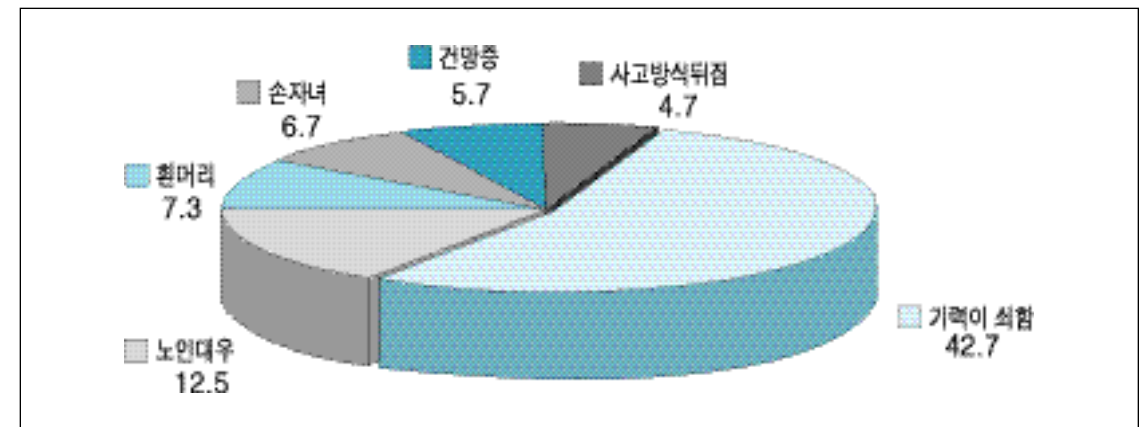


7.



8.

( : %)



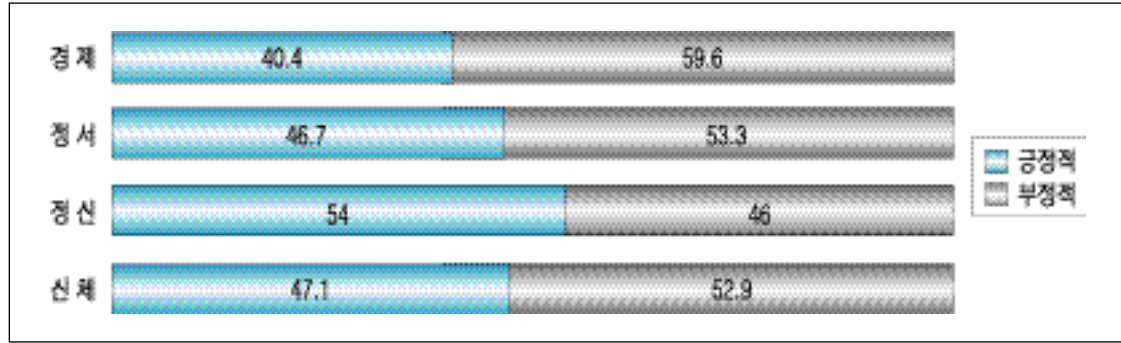
(2)

46.0%  
가 54.2%  
( )  
가 47.1% , 52.9%, 47.1% 46.7% ( )  
54.0% ) 가 40.4%

가 41.4%  
가 25.1%  
가 59.2%  
/ / 51.7% 50%  
(48.2%) 가 (99.3%) 39.1%, 21.7%,  
47.2% 18.2%, 11.2%  
(14.6%) 가 (25.5%) 가  
가 65  
가 가 4)  
가 가 (1)  
가 가 가  
3) 70~74 47.2%  
65~69 30.8% . 75~79  
80 4.3%  
가 42.7%  
7 가 78.1% 12.5%  
가 76.1%, / / 7.3%, 가 가 6.7%,  
75.7% 가 5.7%, 4.7%

9.

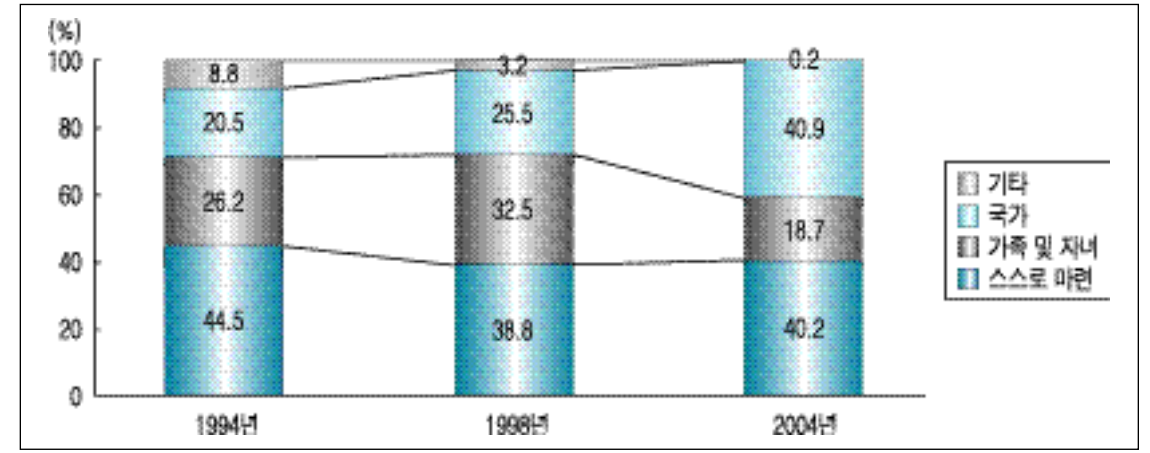
( : %)



(3) 65 ~ 69 37.0%, 70 ~ 74 28.5%, 75 14.8%

(4) 32.5%  
1/3 가  
27.8% , 16.3%, 14.5%  
3.1%, 2.4% 가  
40.9%가 가, 40.2%가 가  
18.7% 가 25.5%, 38.8%, 가 32.5% 가  
, 75 , 가 49.7%  
65 ~ 69 19.8%, 70 ~ 74 , 가  
16.3%, 75 11.5%

10.



(5) 가 . 가  
60.8% 가 , 가 40.1%  
29.0%, 13.1%,  
64.9% , 11.5% 가  
25.8%, 9.2% , 가 26.6% 가  
50.0% , 가  
가 27.1%, 가 56.0% , 가  
가 22.5% 가 가 30.6%, 9.7% .  
7.

( : %)

( )	64.9	27.1
( )	25.8	50.0
	9.2	22.5
	0.1	0.4
( )	100.0(1,809)	100.0(1,833)



