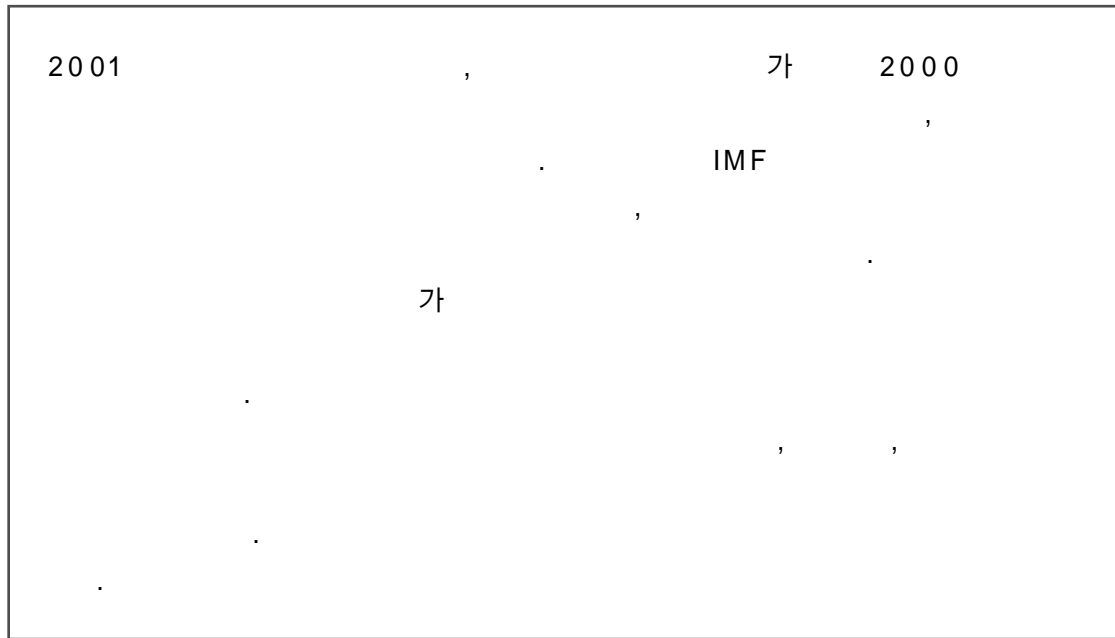
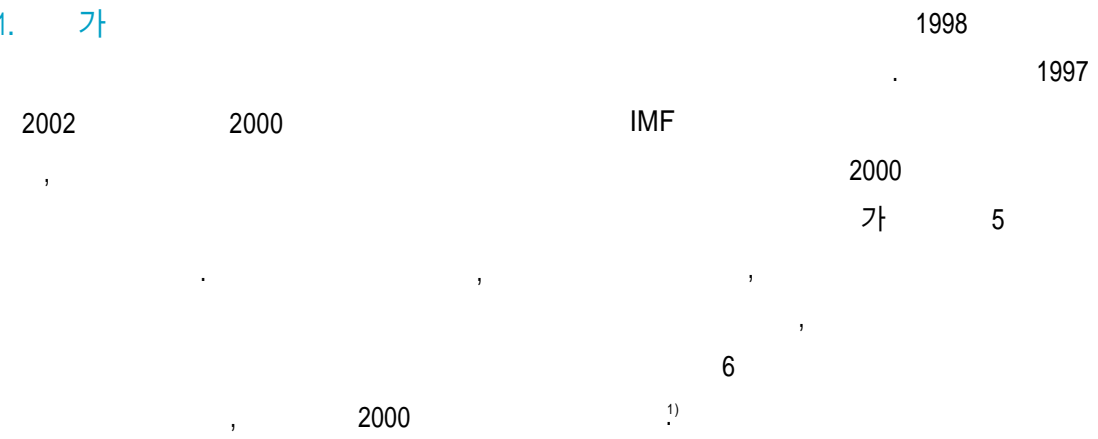


Status of Hospital Management after the Separation of Prescribing and Dispensing

吳泳昊



1. 가



「2001 (2003 10 , 500 , 300~499 , 200~299)」 , 2001 100~199 . < 1 >

2.

가
1998 , 2000 . [2-2]
1998 76.2% , 2000 가 2001 82.6% 가

222

1.

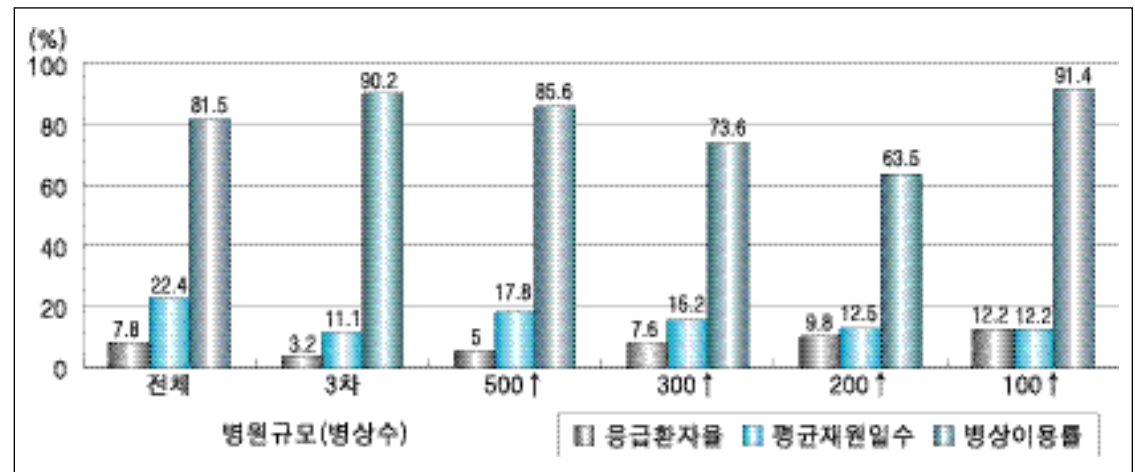
(: , %)

	3					
	500	300	200	100		
222(100)	31(14)	51(23)	53(24)	61(27)	26(12)	
50(100)	15(30)	12(24)	11(22)	7(14)	5(10)	
59(100)	8(8)	15(22)	17(23)	14(34)	5(13)	
103(100)	8(13)	23(24)	24(27)	35(20)	13(16)	
10(100)	-	1(10)	1(10)	5(50)	3(30)	
45(100)	6(13)	11(24)	12(27)	9(20)	7(16)	
177(100)	25(14)	40(23)	41(23)	52(29)	19(11)	

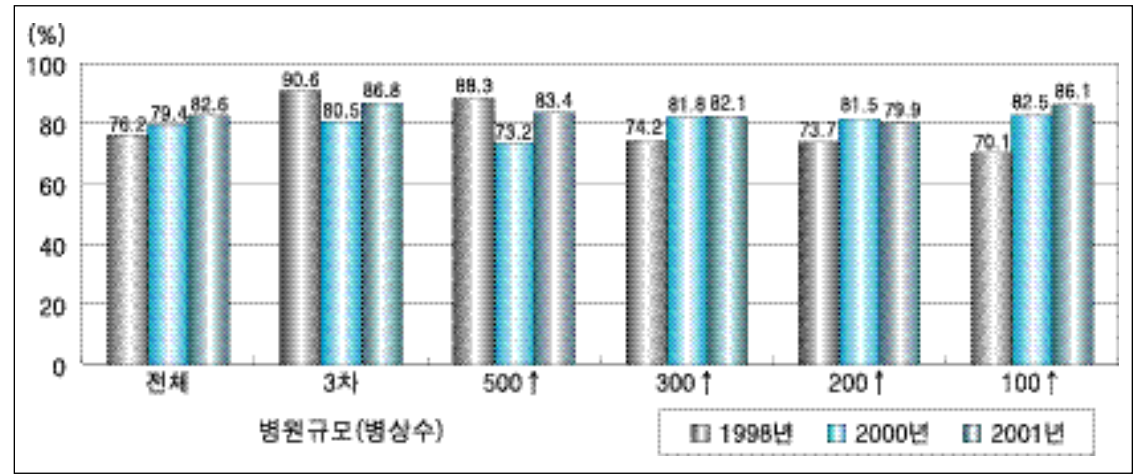
1) , 2000 12 18

, 2001 가 300~499 가 3 200
3 100~199 가 3 200
86.8% 86.1% .
500 3 .
1998 60~70%
, 100 499 가 . 가 .

2-1.

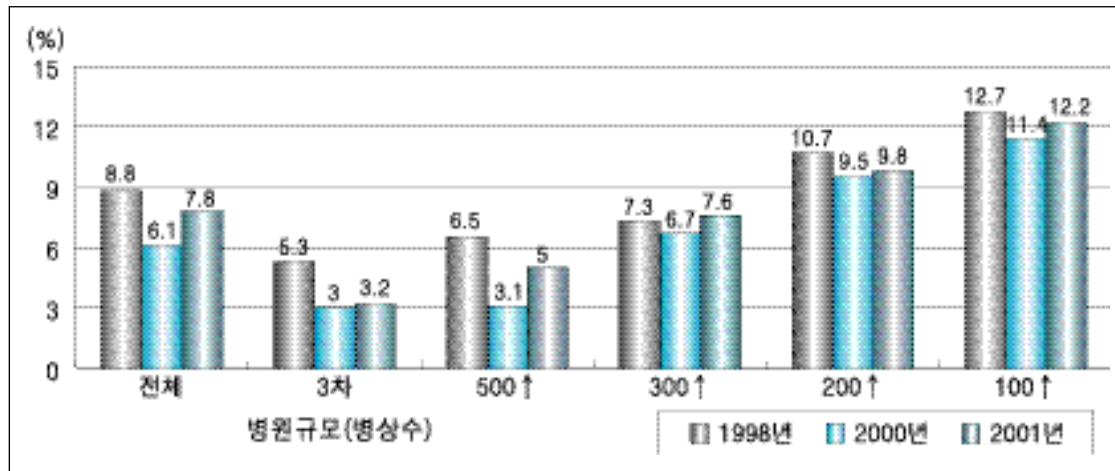


2-2.



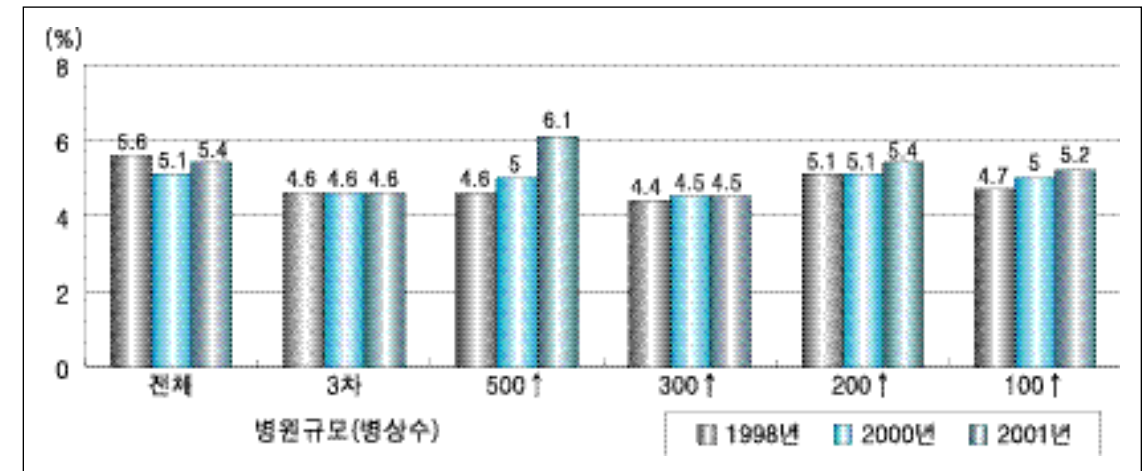
1998년 26.4%, 2001년 3.5%로 감소하였다. 300~499병상 규모의 병원은 1998년 5.4%, 2001년 3.1%로 감소하였다. 2000년 7.8%, 2001년 10%로 증가하였다. 100병상 이하의 병원은 1998년 2.2%, 2001년 12.2%로 증가하였다.

2-3.

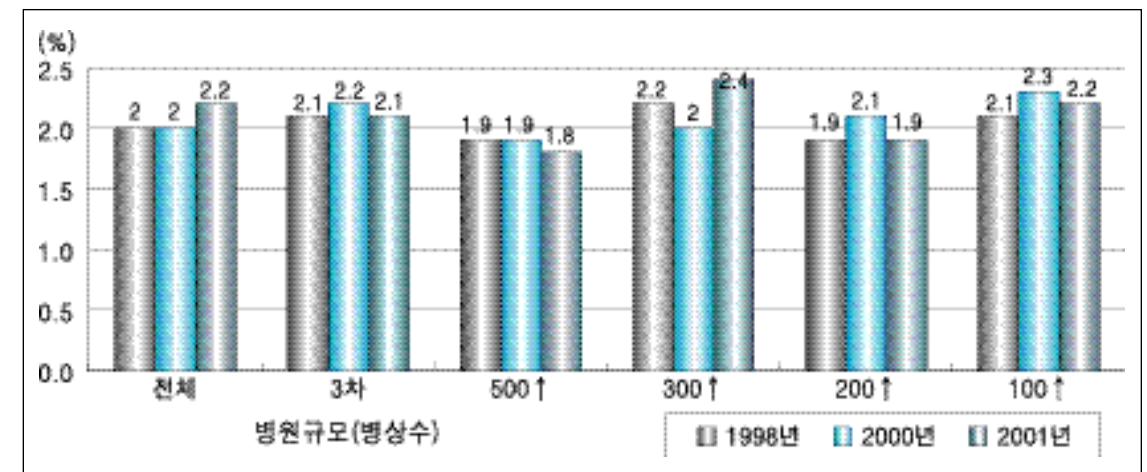


2) 「」 1998.

2-4.

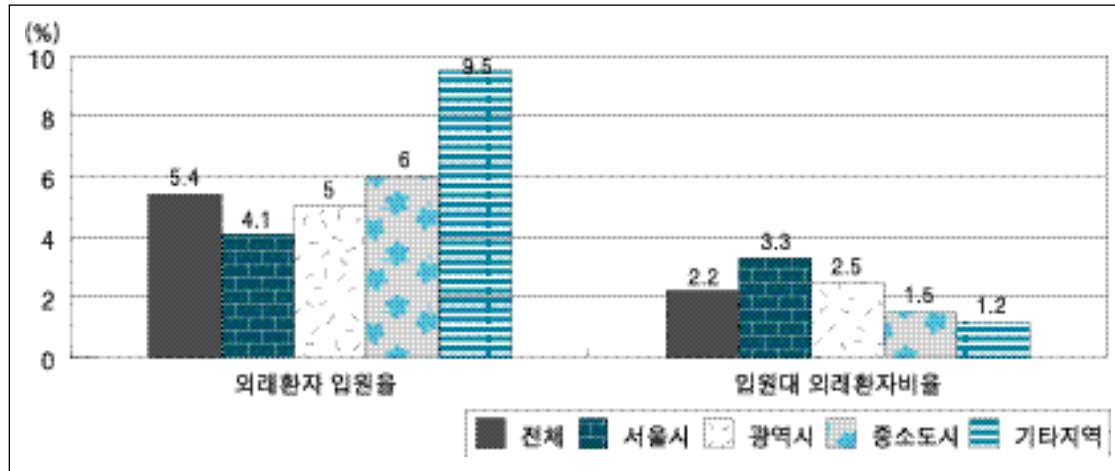


2-5.

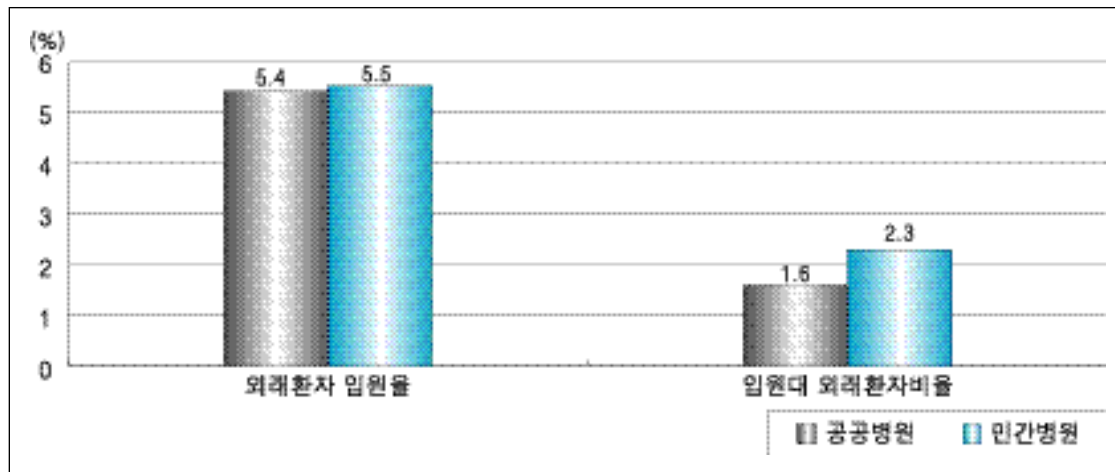


1998년 2.0%, 2000년 2.2%, 2001년 2.2%로 증가하였다. 300~499병상 규모의 병원은 1998년 2.2%, 2000년 2.0%, 2001년 2.4%로 증가하였다. 200~299병상 규모의 병원은 1998년 1.9%, 2000년 2.1%, 2001년 1.9%로 감소하였다. 100~199병상 규모의 병원은 1998년 2.1%, 2000년 2.3%, 2001년 2.2%로 증가하였다.

2-6.



2-7.



3.

가

1) (Growth Indicators)

가

가

10.2%, 7.1%

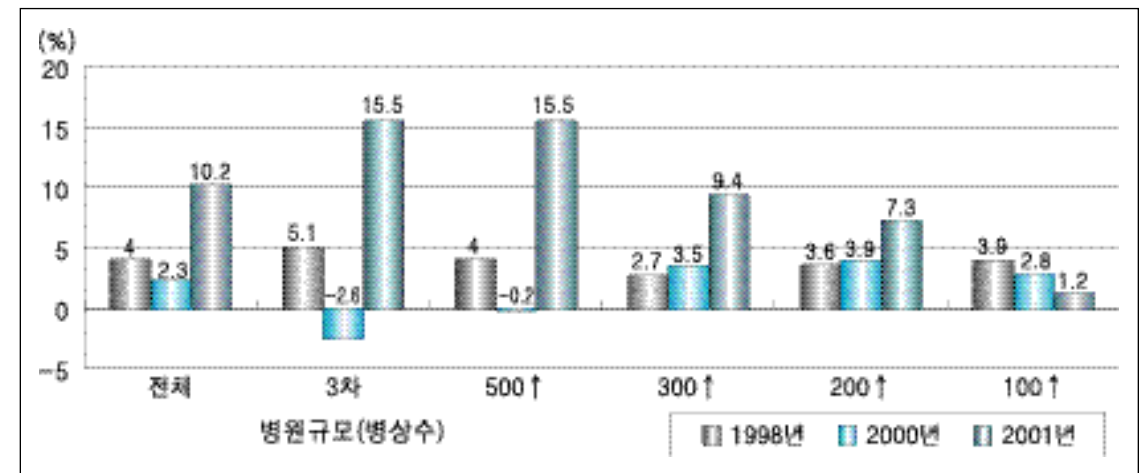
가

{

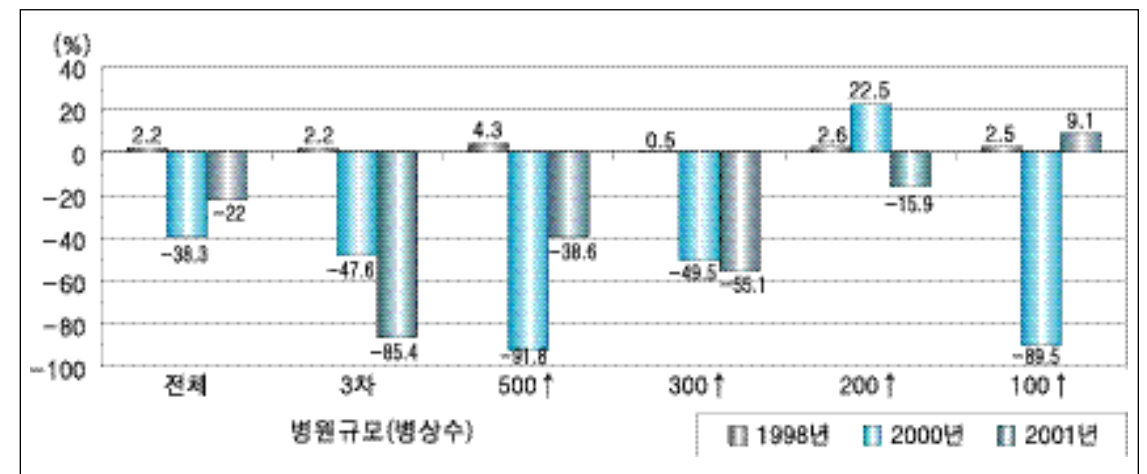
3-1] 가 200 가 209.2%가 가 가 가 가

가 200 가 500 가 2000 가 1998

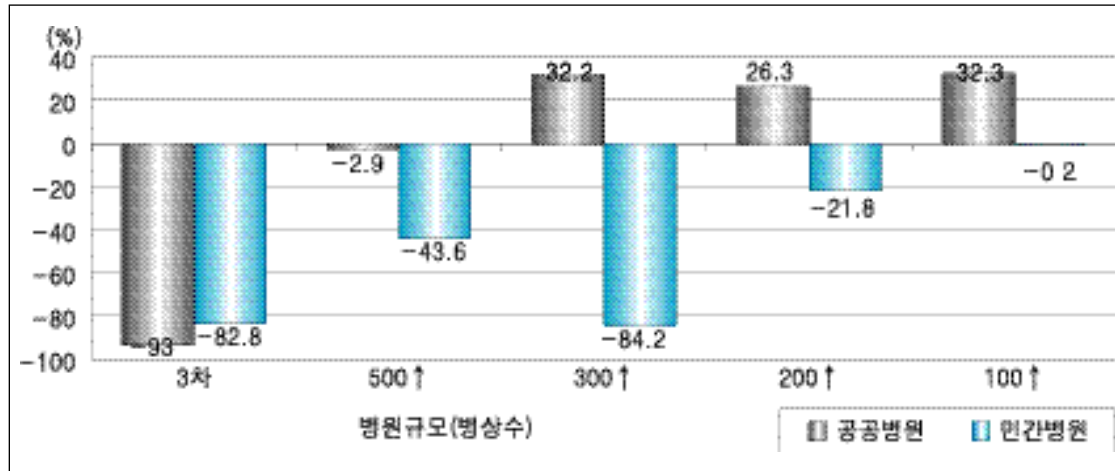
3-1. 가



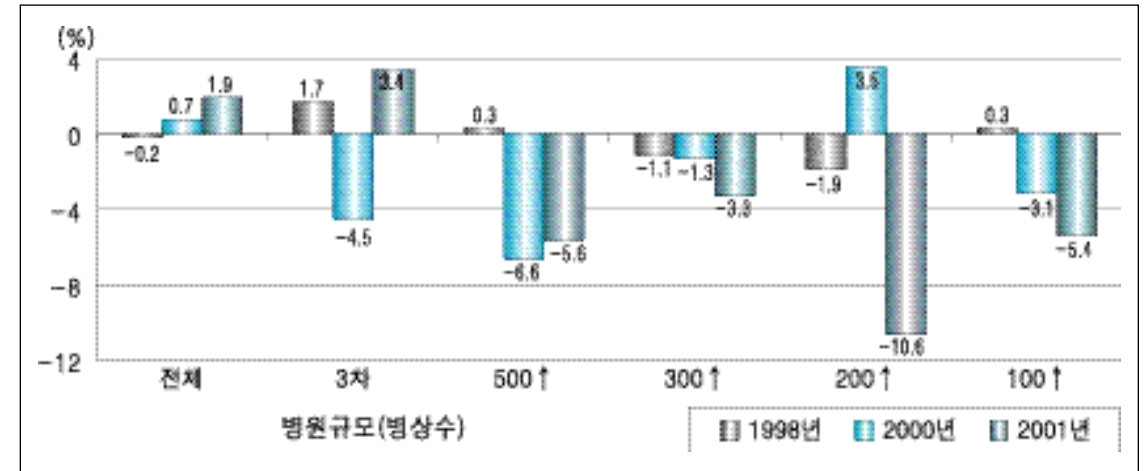
3-2. 가



3-3. 가

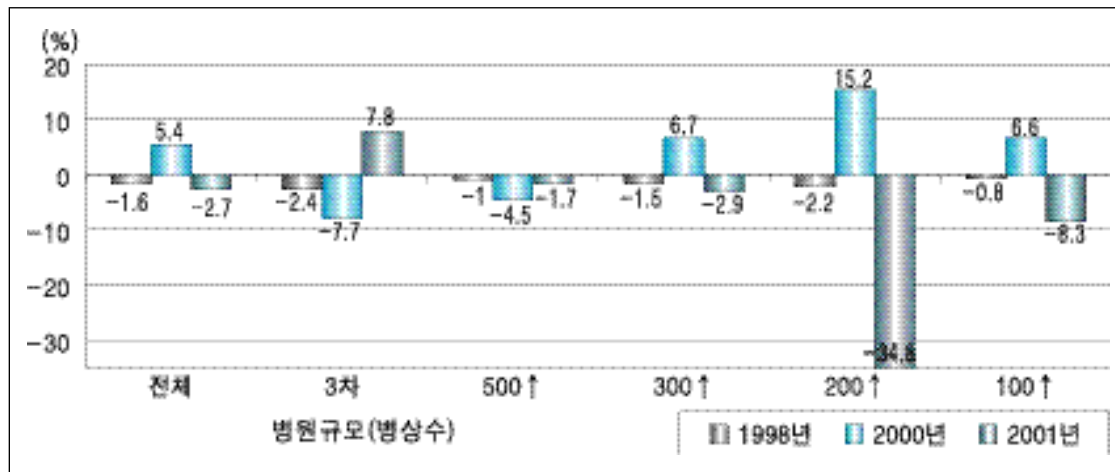


3-5. 가



가 2.3% 가
 200 2.8가
 가 가
 가 0.7% 1998 가
 3 2000 가 2001

3-4. 가



1998 1 가가 , 1
 -2.7% 가 1 가가 38,447
 1998 가 , 300
 가 , 300
 3 가 가 3 1
 (-) 71,393 1
 200~299 가 417,952 369,757
 1
 1
 2) (Productivity Indicators) 1
 58,662
 25,187
 1 가가

1998 가가 63.2%

2001 가 . 1 가 가

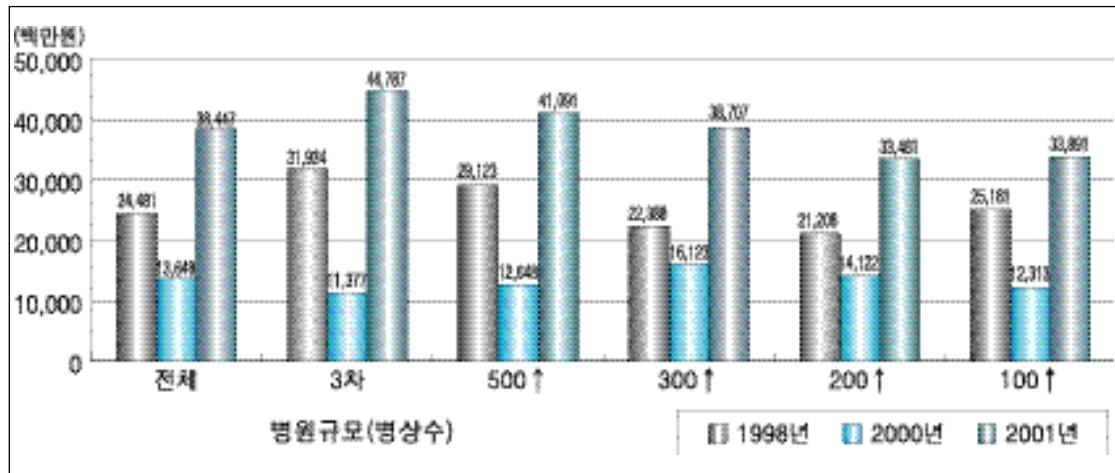
200 가가

2001 200~299 300~499 가

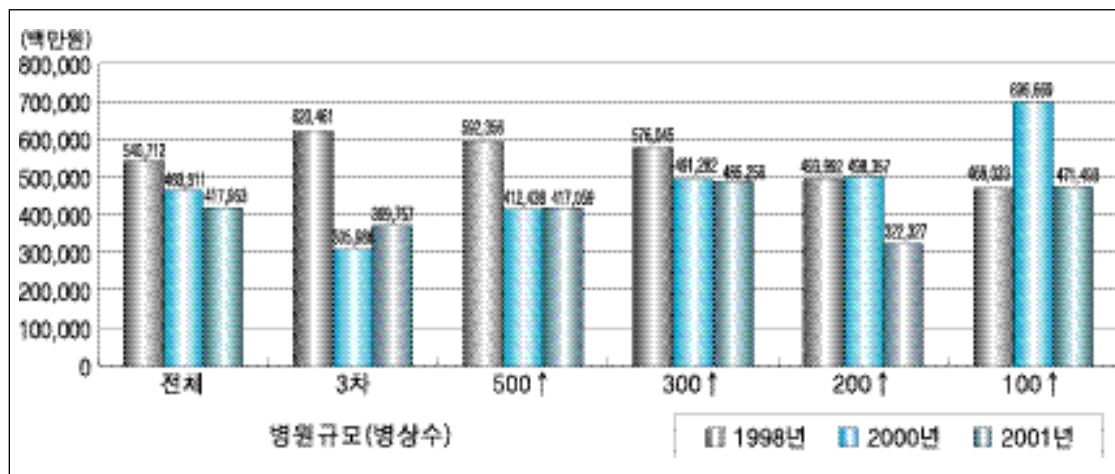
125.8%, 65.4% 65.2% 가 .

122.3%,

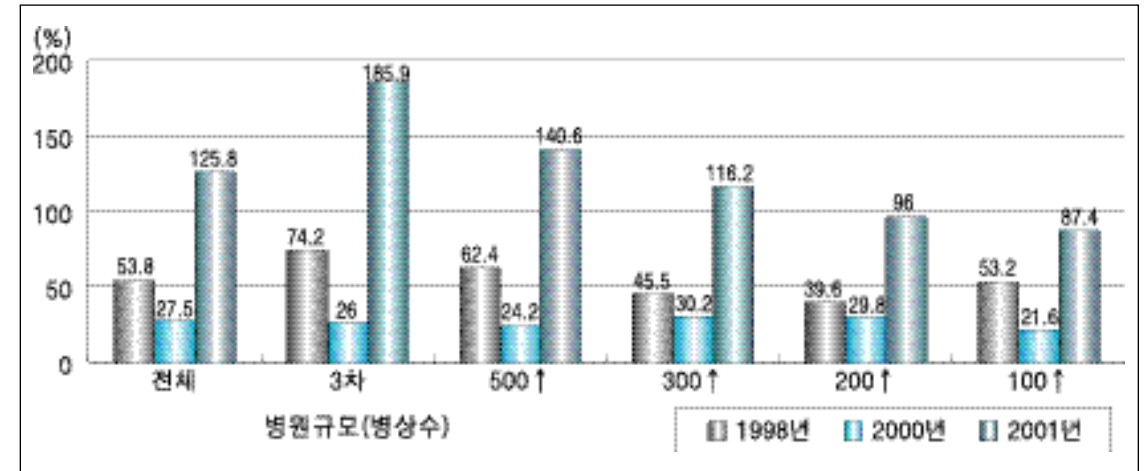
3-6. 1 가가



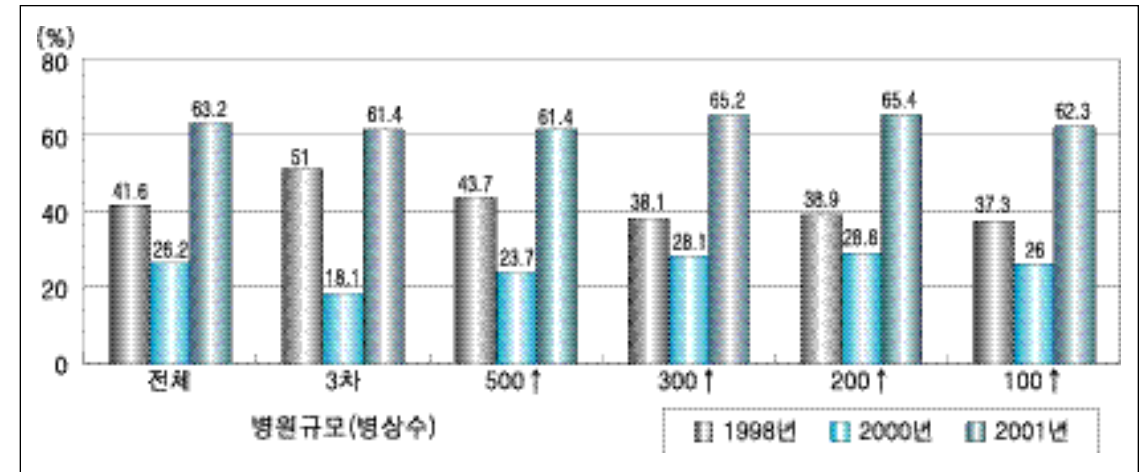
3-7. 1



3-8.



3-9. 가가



22.7%

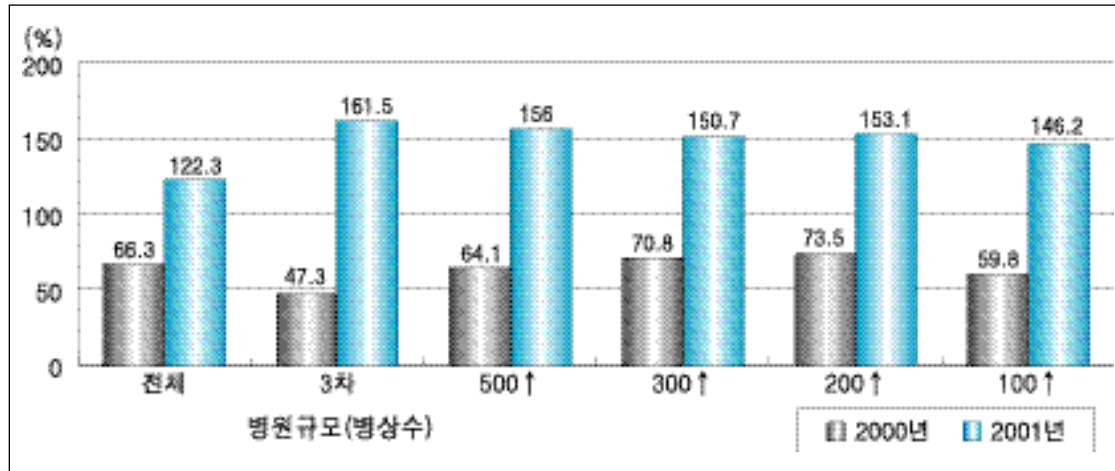
가

2000 22.1%

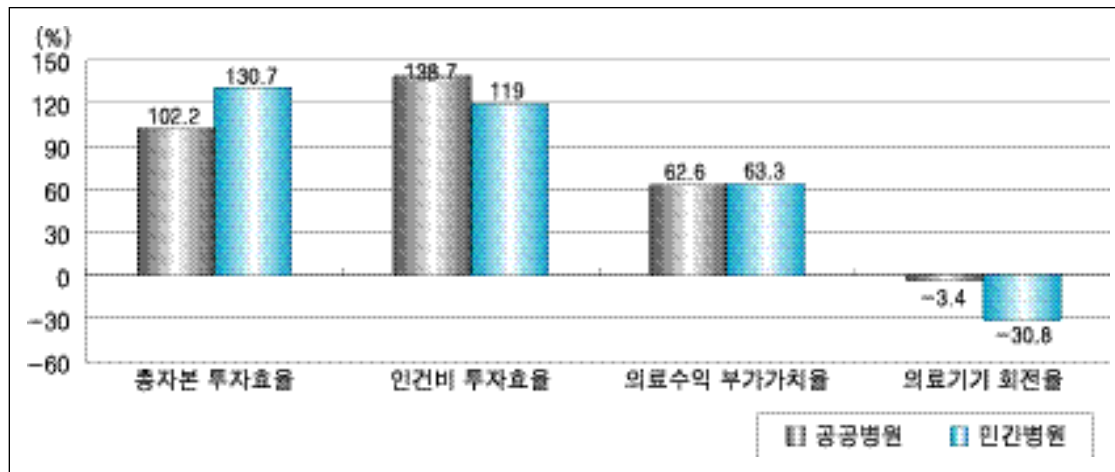
2001 -25.6%

가

3-10.



3-11.



3) (Activity Indicators)

0.8% 1998

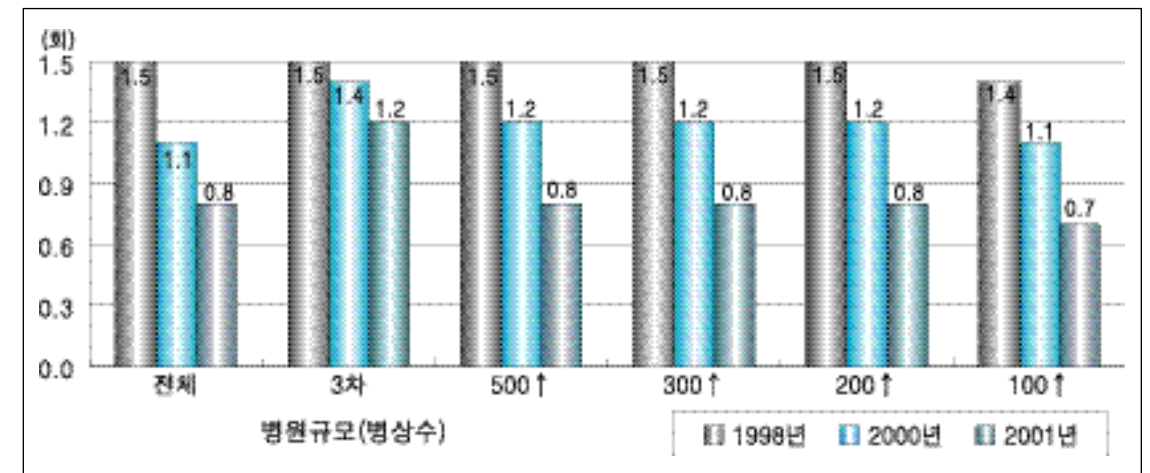
가

0.8%

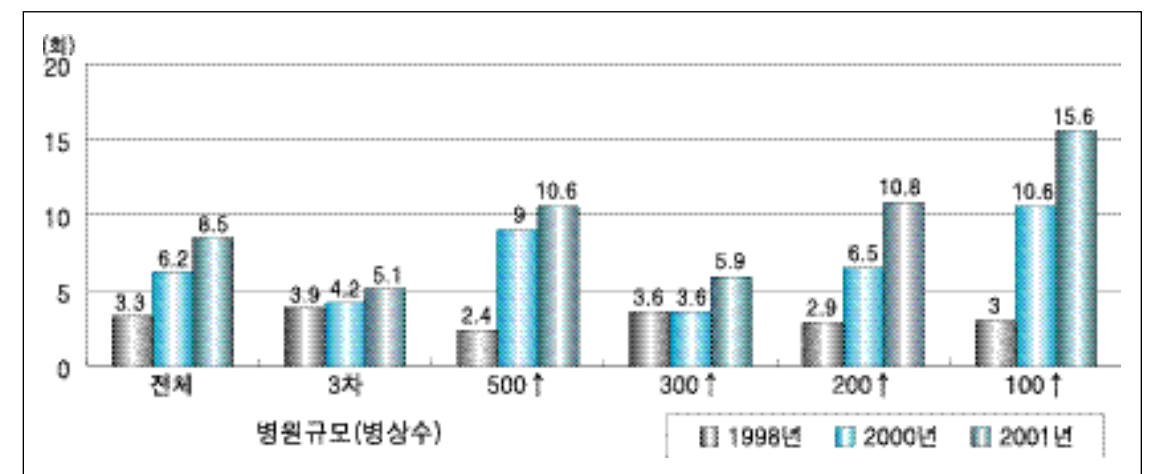
2001 8.5% 1998
3.3%, 2000 6.2%
가

20

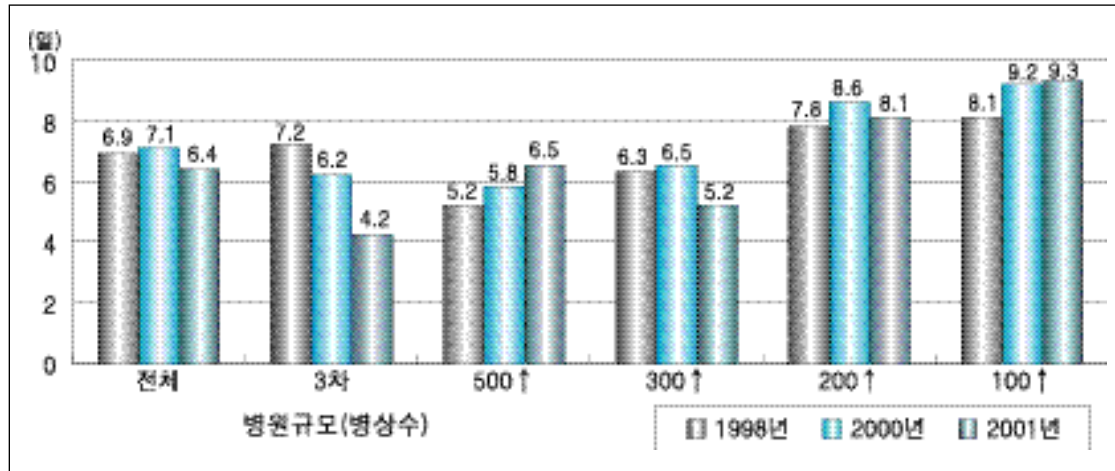
3-12.



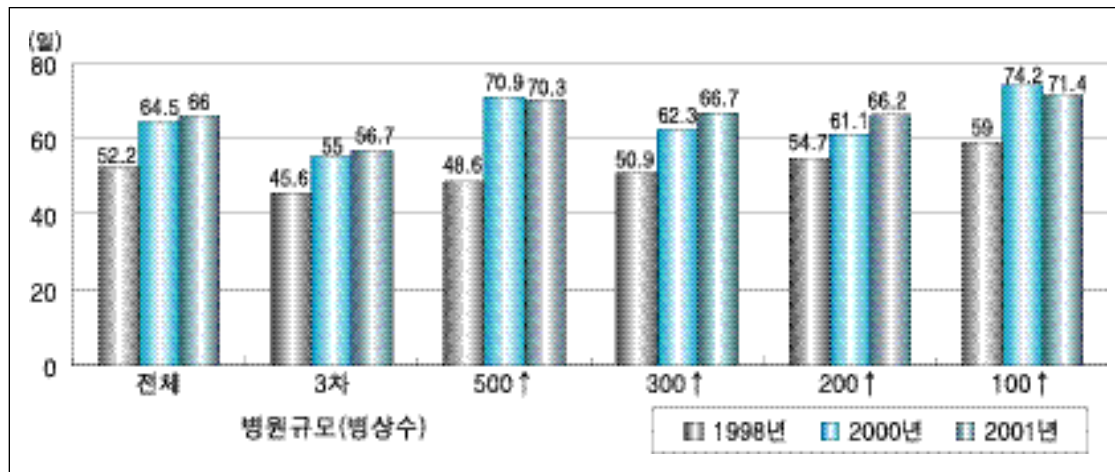
3-13.



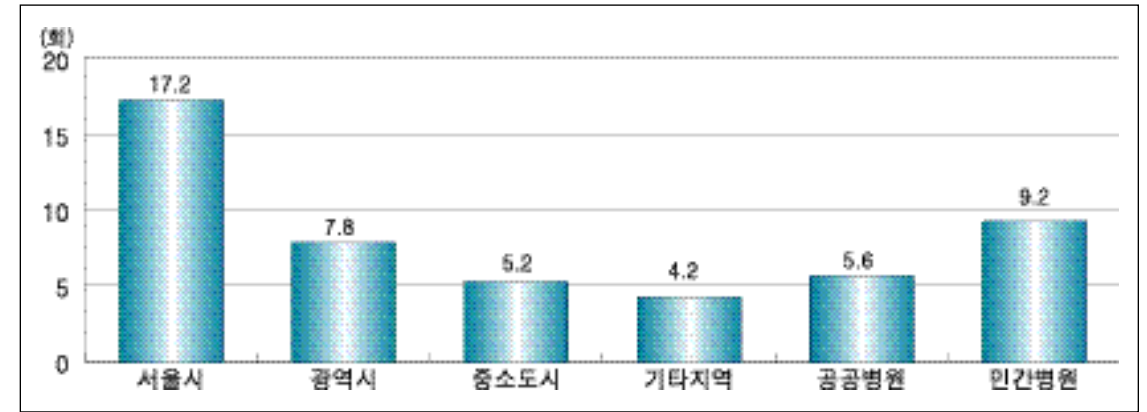
3-14.



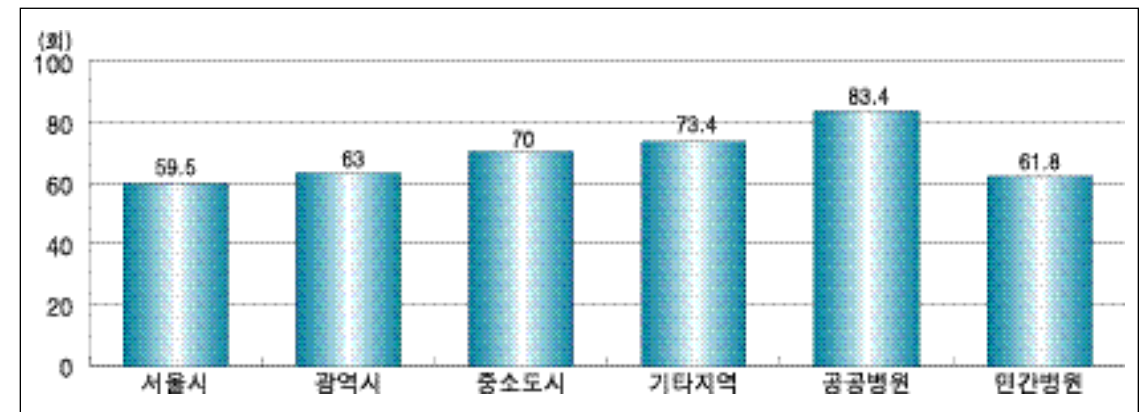
3-15.



3-16.



3-17.



가 1998

4) (Profitability Indicators) 1.3%

1998

{ 3-18} 299

2000 (+) 1998 가

가 300 (-) 1998

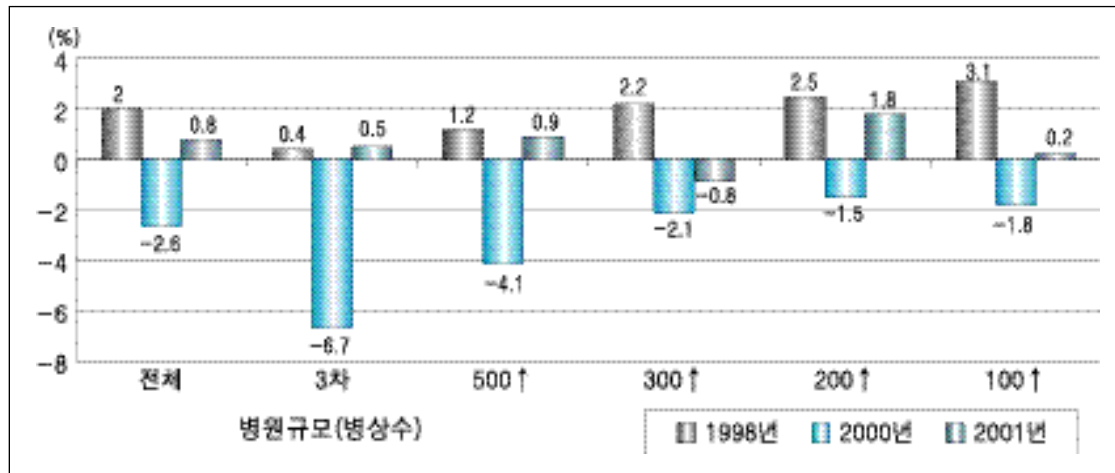
1998 20.1% 가

300~499

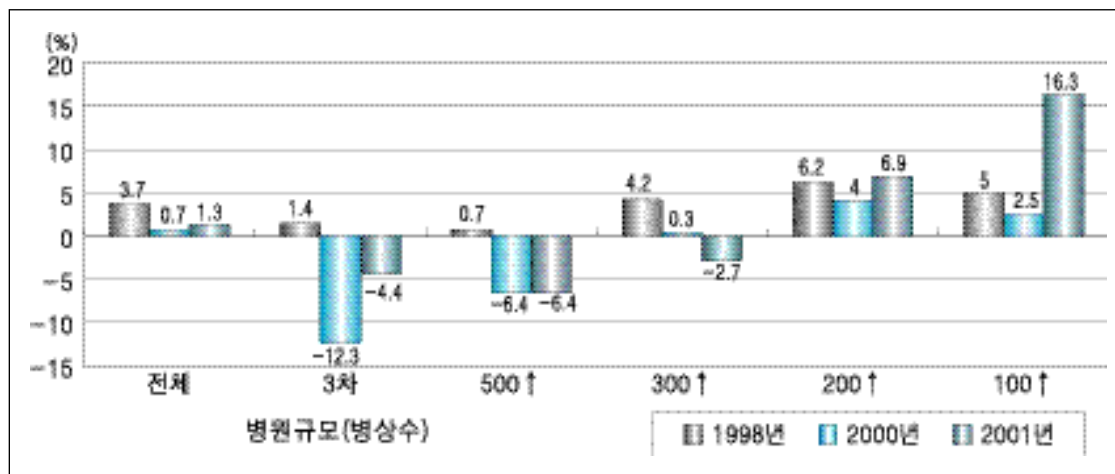
3) , P a 1998.

200~299 500 300 가
 가
 3 500 0.1% ,
 가 , , 가 가

3-18.

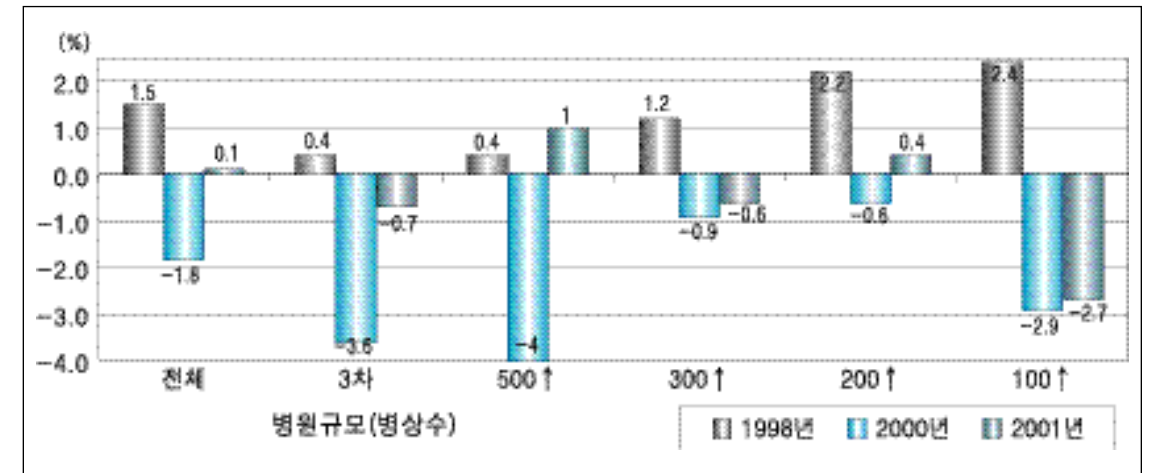


3-19.

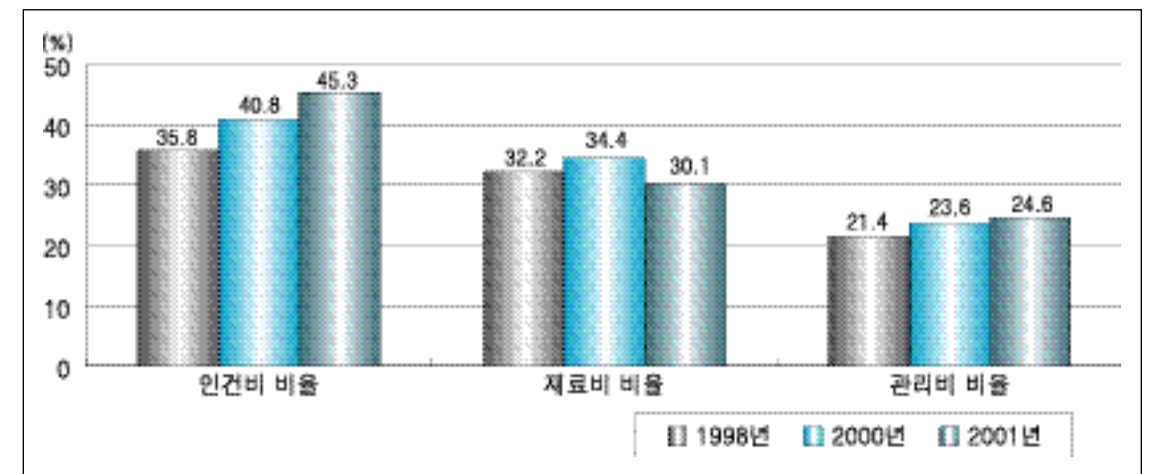


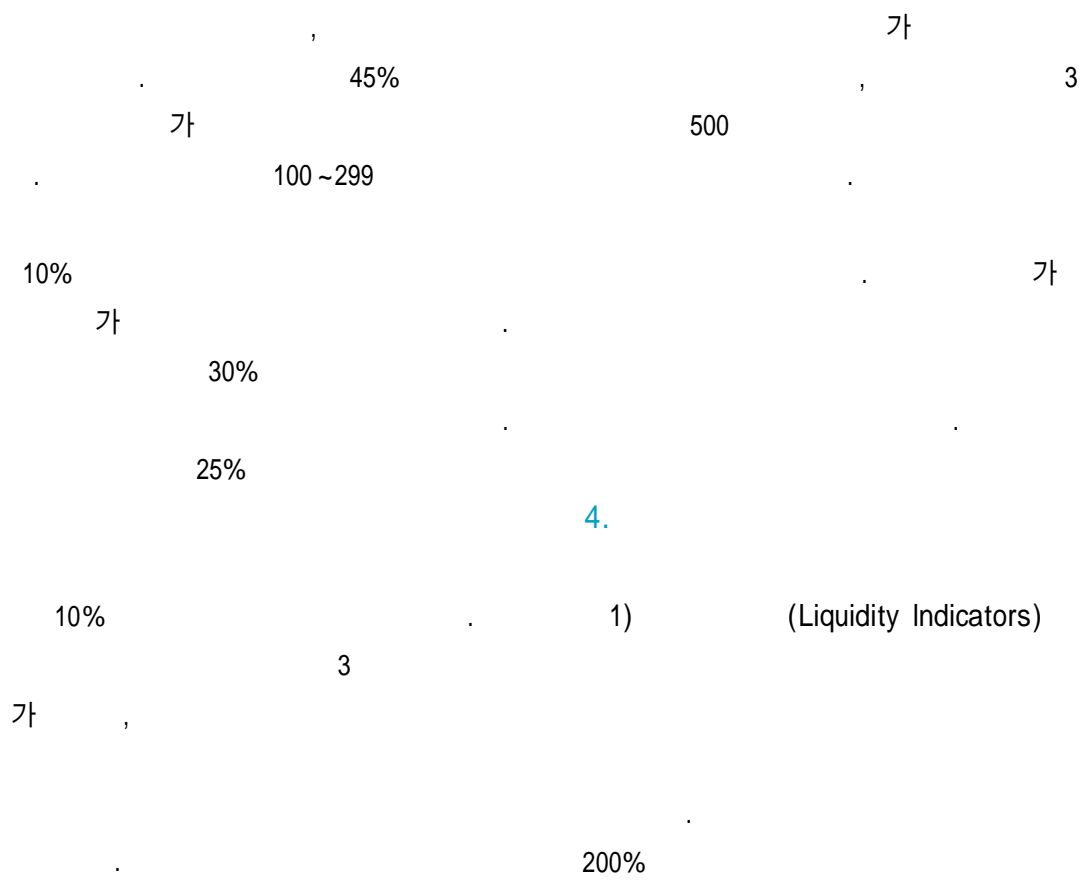
2001 2000 가 [3-21]
 500 (3) 가 1998 1998
 가 , , 가 가

3-20.

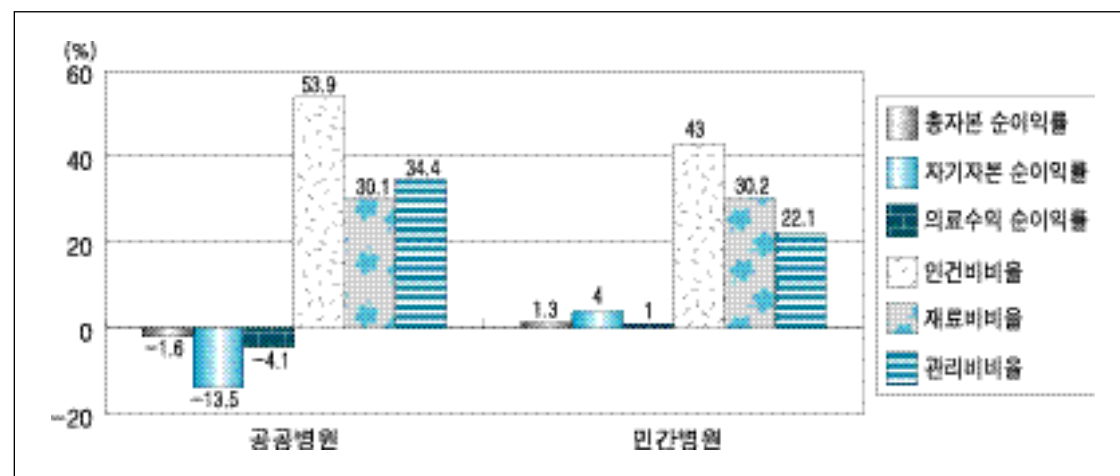


3-21. 가

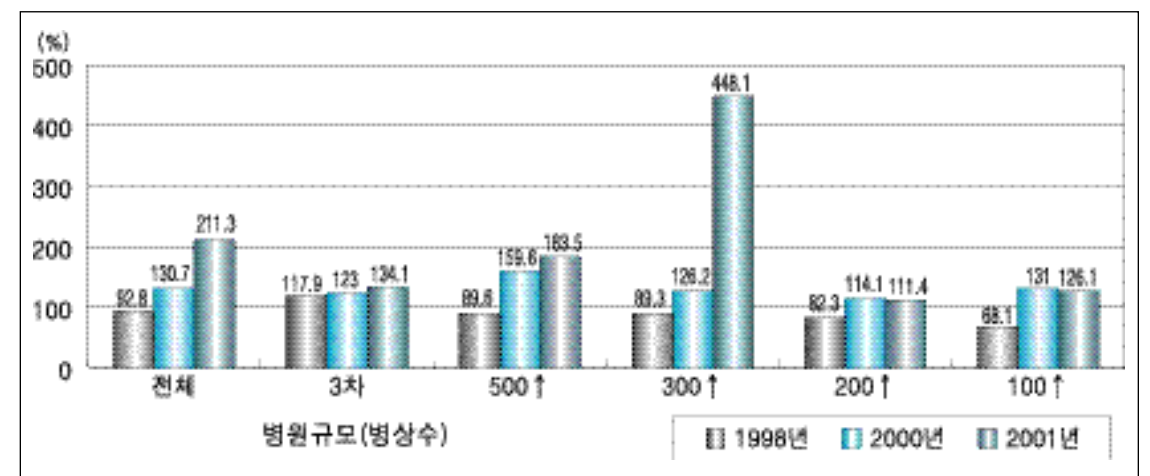




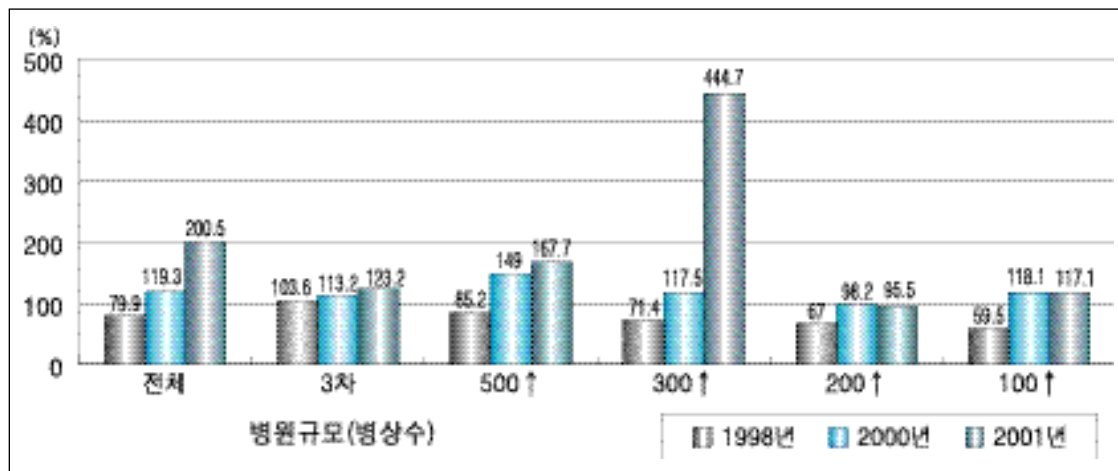
3-22.



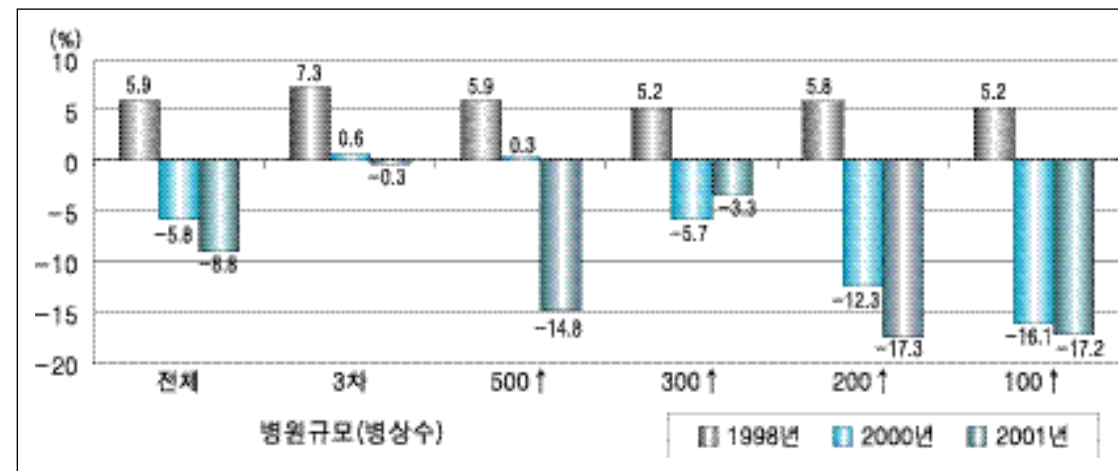
4-1.



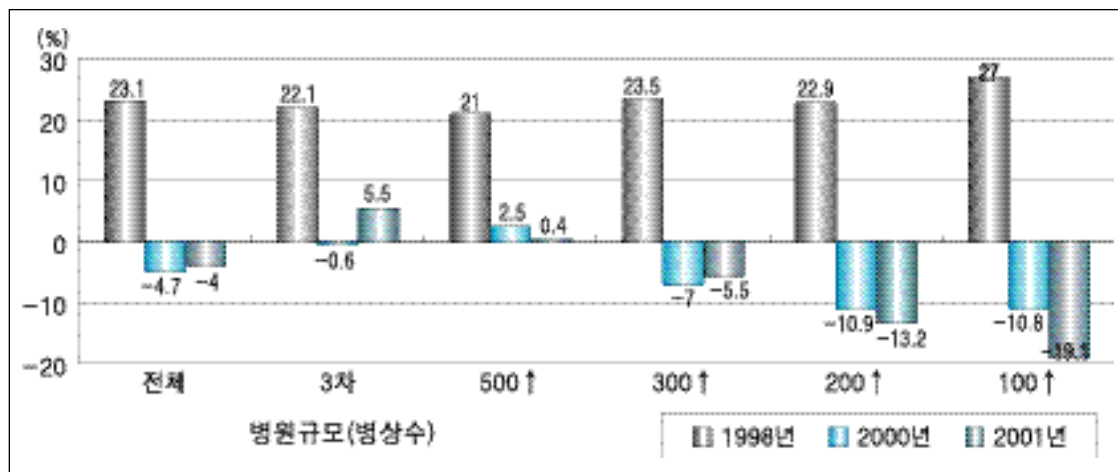
4-2.



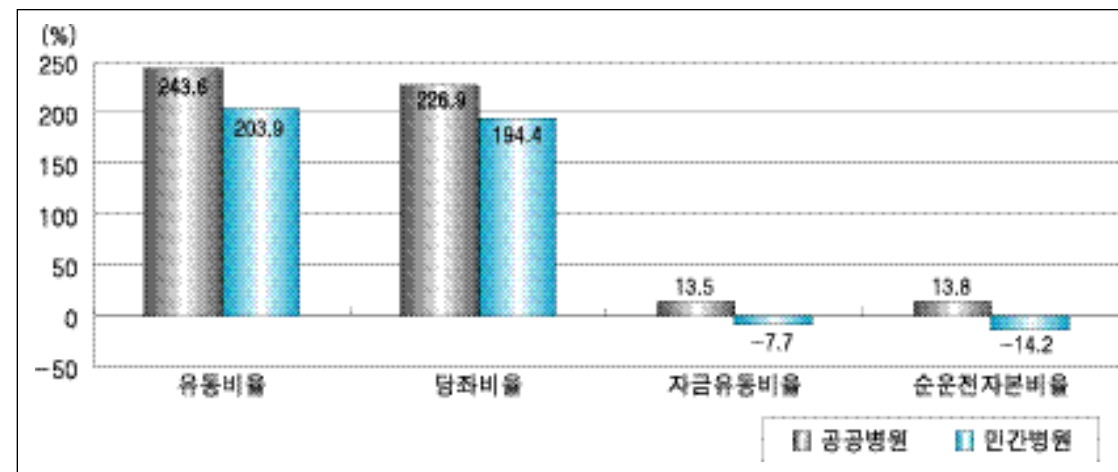
4-4.



4-3.



4-3.



가 1998 2) (Stability Indicators)
-8.8%

300

7.7 (76%) 621%

306%

1998

1998 141% 2001

가

767% 5 가 , 100~199

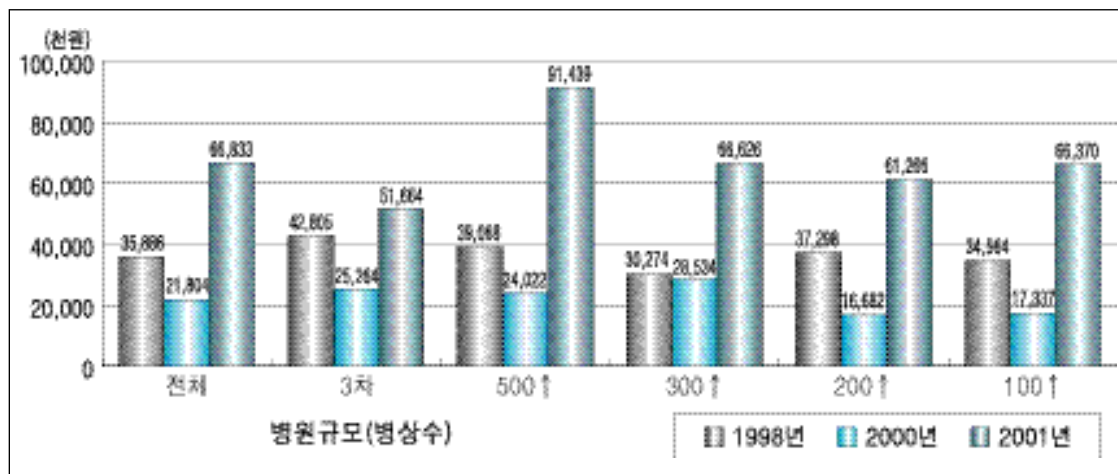
164%

가

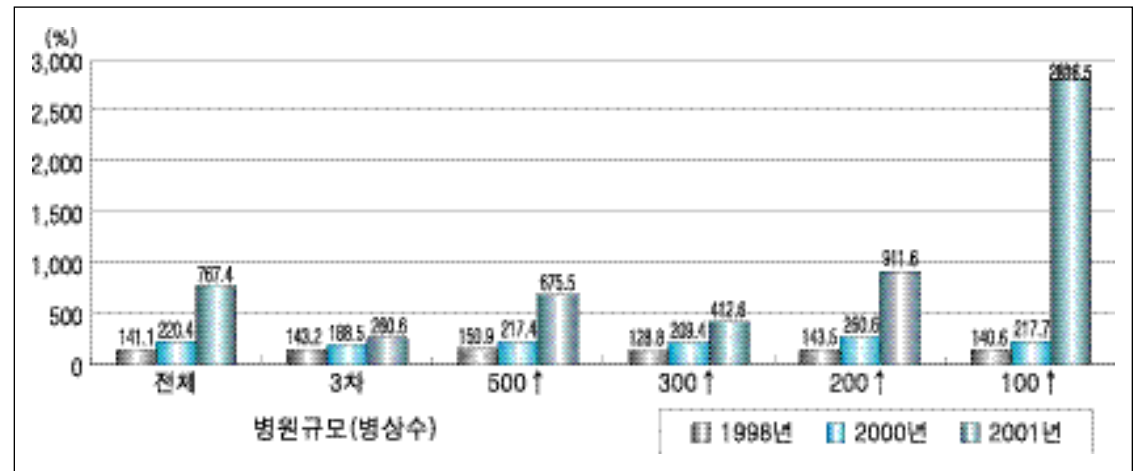
150%

150% 2,403% 100% 가 200 100% 3 2001 가 60~70% 가 200 287.5% 가 200~299 가 79.1% 94.3% 200~399 78.8% 가 60% 70% 가 270%, 94% 690%, 178% 3, 300~499, 100~199 33.2% 12.8% 46%

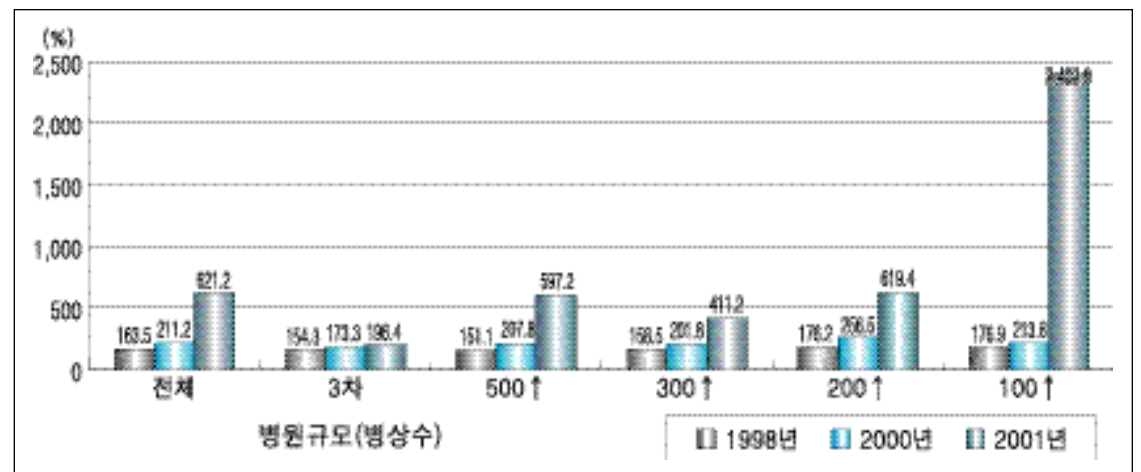
4-6.



4-7.

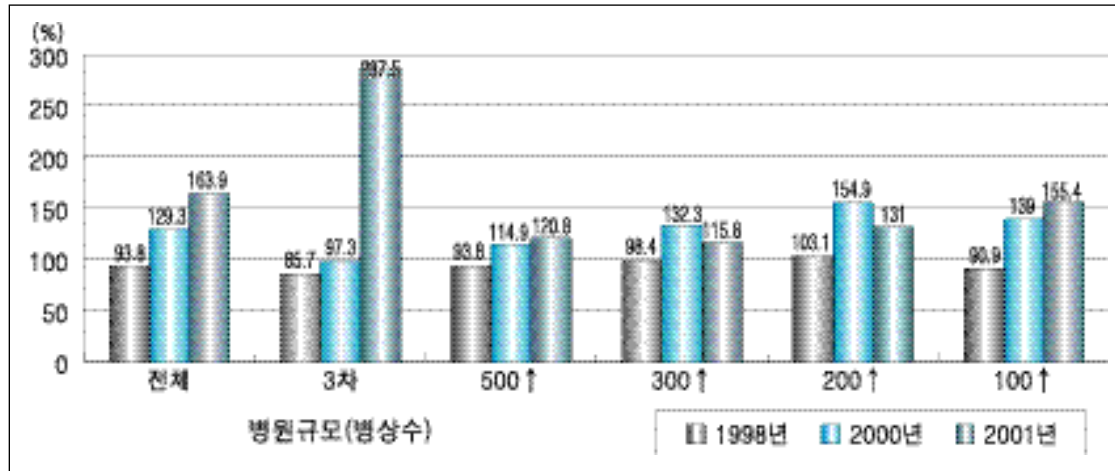


4-8.

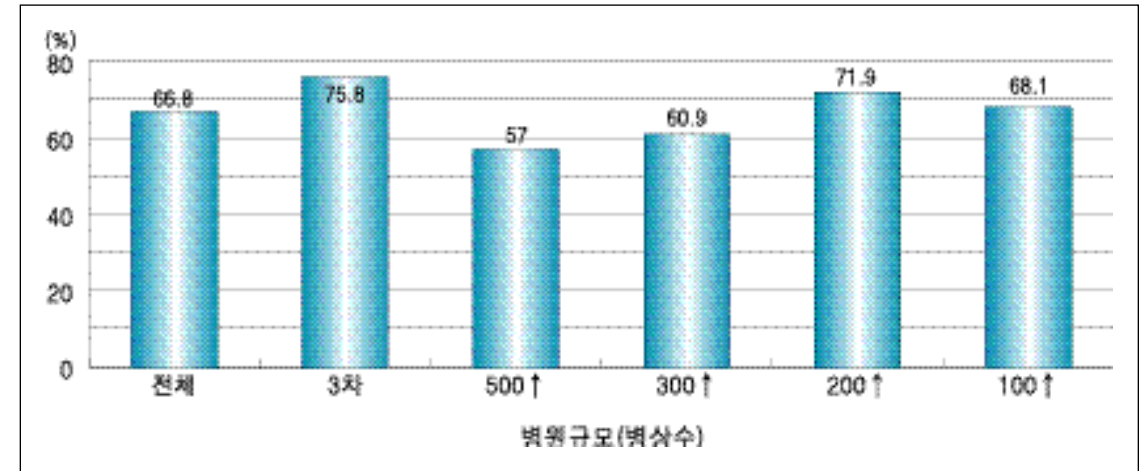


가 3 20.1% 2001 2000 1998 5. 2001 1998 2000 가

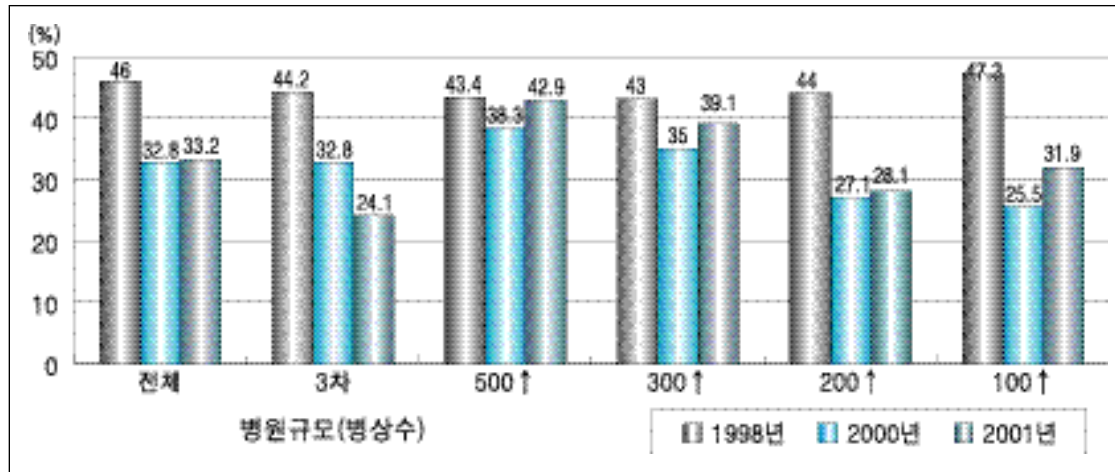
4-9.



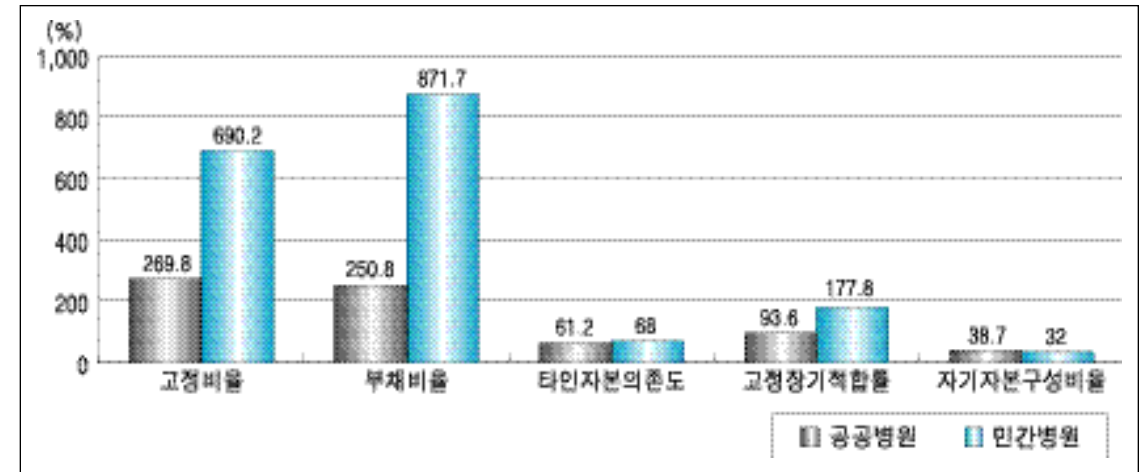
4-11.



4-10.



4-12.



가 , 499 가
 가 , 3 500 가 가 ,
 가 , 100~199 (-) 1 가 ,
 가 , 1 가 ,

2001

가 2000

가
가

IMF

211% 200% 가

가

가

가

가

