

Tel +82-44-287-8000
Fax +82-44-287-8052

www.kihasa.re.kr/english/main.do

Building D, Sejong National Research Complex,
370, Sicheong-daero,
Sejong-si, 30147, Korea



CONTENTS

04	Vision	10	Organization	33	Building and sharing evidence to advance social policy
05	Management Goal	12	Departments, Research Groups, Units, and Research Centers	37	Publications
06	President's Message	30	International cooperation	36	Location Map
08	History	32	A social policy breeding ground keeping in close communication with the public		



Research into a
happy future for all



Charting forward-looking policies that lead the future of health and welfare



Map out policy visions for inclusive welfare

- Carry out research into inclusive welfare and disseminate the philosophy of inclusive welfare
- Develop mid-and long-term plans for social policy

Strengthen KIHASA's contribution to national policies that put people first, based on the principle of *silsa-gushi*, meaning "seeking truth grounded in real-life evidence"

- Develop policy strategies for raising people's quality of life and happiness
- Carry out research into a forward-looking health and welfare policy framework based on the "people-first" principle
- Build up an effective system of producing and managing research findings with a view to strengthening KIHASA's contribution to policymaking



Pursue an open administrative system

- Open up research findings and strengthen the system of information dissemination
- Encourage public opinions about policy needs
- Ensure fair and transparent budgeting and expenditure
- Chart and announce a semi-centennial vision for KIHASA

Rearrange and renew the organizational structure to reinforce the research capacity

- Strengthen people-first human resources management
- Augment the in-house communication base as a way to promote convergent research projects
- Ensure KIHASA is a workplace with breathing spells

Probe into the last hundred years of health and social policies and present an analytic outlook for the next hundred years

- Carry out a historical assessment of health and welfare policies and strategies
- Revise health and welfare policies in preparation for South-North social integration; facilitate discussions concerning South-North exchanges and cooperation
- Develop and disseminate, via international cooperation, Asia social development models



What matters most to us is to meet what is expected of us as a leading social policy think tank

The Korea Institute for Health and Social Affairs (KIHASA) has evolved through thick and thin into what it is today. Its contribution over the last half-century to Korea has earned it its status as a leading think tank in health and social policy research. Not surprisingly, the expectations the public has of us are high and rising.

Societies around the globe are changing more rapidly than ever before. Social risks wax high as the technological advancement takes place as it does at a mind-blowing pace in this era of the Fourth Industrial Revolution. A good part of the world today, including Korea, is marked by a range of megatrend challenges—population aging, low fertility, social inequality, neo-poverty, growing social insecurity, family breakdown, and gender inequality—whose solutions cannot be found without breaking away from the lingering shadow of Korea's compressed industrialization, under which inclusive income-led growth has for so long been shut out.

We now need a major change in perception, a gestalt shift from putting growth and distribution in binary opposition to viewing the two as a complementary pair. Research grounded in such a view should be able to lead to development of social policies that are in balance with economic policies. All these will serve as building blocks for realizing the Moon Jae-in Government's overarching vision of "Just Korea, a People's Country."

Here I put forth four principles I will adhere to as I lead KIHASA into the future. They are the principles of creativity, autonomy, public responsibility and transparency. Research at its core is about creating new knowledge. Creativity does not emerge in coercion or by force. I believe that researchers must be given professional autonomy to be creative. A national think tank like KIHASA must uphold the principle of public responsibility. It must keep its ears open to the needs of people, putting public weal before private gain. Also, KIHASA as an organization must keep itself open and transparent, for closed organizations make for injustice and corruption. These principles will guide us as my fellow KIHASA colleagues and I work together toward the following five goals.

Firstly, KIHASA as a leading social policy think tank will map out policy directions and workable strategies for a proactive, inclusive welfare state, which, as envisioned by the government, is a "state that takes care of people's lives."

Secondly, KIHASA will channel part of its research capacity into studying the history of social welfare in Korea. As the year 2019 marks the centennial of the Republic of Korea's founding, it behooves KIHASA to probe in depth into the last hundred years of health and social policies in Korea and work out an analytic outlook of health and social policies for the next hundred years, following the dictum *beob-go-chang-shin* ("build the new onto the old"), which was coined by Yeonam Park Ji-won, a writer and thinker who lived in the 18th century Chosun Dynasty.

Thirdly, KIHASA will keep strengthening its contribution to national policymaking. This requires that our research outcomes have direct impact on people's lives and that our research be conducted in a manner described by Jeong Yak-yong, the 18th-century thinker best known for his pragmatism, as *silsa-gushi* ("seeking truth grounded in real-life evidence").

Next comes strengthening KIHASA's creative research capacity, an undertaking involving maintaining a talented workforce, improving the research information system, and nurturing an organizational culture of interactive communication.

Lastly, KIHASA pursues open management. This will be administered and managed in such a way as to befit the expectation the public has of us, adjusting and harmonizing different points of view, yet, as the phrase *hwai-budong* from the Analects of Confucius suggests, without compromising the principles I mentioned above.

Thank you for your encouragement and criticism.

Heung-Seek Cho
President, Korea Institute for Health and Social Affairs

History

1971

- Korea Institute for Family Planning (KIFP) founded
- Led national research on population and family planning policy
- Youn Keun Cha inaugurated as 1st President of KIFP

1974

- Jong Kwan Hong inaugurated as 2nd President of KIFP

1976

- Dae Woo Han inaugurated as 3rd President KIFP

1981

- Korea Institute for Population and Health (KIPH) founded with the merger of KIFP and KHDI
- Charted policy directions for population programs, health and social welfare
- Chan Moo Park inaugurated as 1st President of KIPH

1987

- Kyung Shik Chang inaugurated as 2nd President of KIPH
- Dal Hyun Chi inaugurated as 3rd President of KIPH

1997

- Established Planning Committee for National Pension Improvement

1998

- Established Steering Committee for Health Insurance Integration
- Kyung Bae Chung inaugurated as 6th President of KIHASA
- Established Steering Committee for Social Insurance Integration

2000

- Established Planning Committee for Child Care Development

2002

- Soon Il Bark inaugurated as 7th President of KIHASA

2003

- Established Steering Committee for Public Elder Care Provision

2008

- Yong Ha Kim inaugurated as 9th President of KIHASA

2009

- Established Center for Comprehensive Research on Low Fertility
- Provided new standards for increasing national minimum benefits

2014

- Moved to Sejong City
- Planned ways to strengthen health insurance benefit coverage
- Provided the research basis for pension reforms and for policies on low fertility and population aging

2015

- Sang Ho Kim inaugurated as 12th President
- Provided support in the making of 3rd Basic Plan for Low Fertility and Aging society



1976

- Korea Health Development Institute (KHDI) founded
- Presented a basic framework of national health policy
- Hyung Jong Park inaugurated as 1st President of KHDI

1978

- Taek Il Kim inaugurated as 4th President KIFP

1979

- Young Hae Yoo inaugurated as 2nd President of KHDI

1989

- KIPH renamed as Korea Institute for Health and Social Affairs (KIHASA)
- Established itself as a key player in research in health and welfare policies

1993

- Sung Woo Lee inaugurated as 4th President of KIHASA

1994

- Ha Cheong Yeon inaugurated as 5th President of KIHASA

1999

- Transferred to the Office of State Affairs Coordination
- Established Planning Committee for Promoting Quality of Life

2005

- Yong Moon Kim inaugurated as 8th President of KIHASA
- Established 1st Basic Plan for Low Fertility and Aging Society

2006

- Established Research Center for Low Fertility and Aging Society

2007

- Established Center for Health and Social Statistics

2011

- Yong Ha Kim inaugurated as 10th President of KIHASA
- Established Planning Committee for the Improvement of Poverty Reduction Policy
- Led the making of 2nd Basic Plan for Low Fertility and Aging Society
- Led the making of Comprehensive Plan for National Health Promotion 2020

2012

- Byong Ho Tchoe inaugurated as 11th President of KIHASA

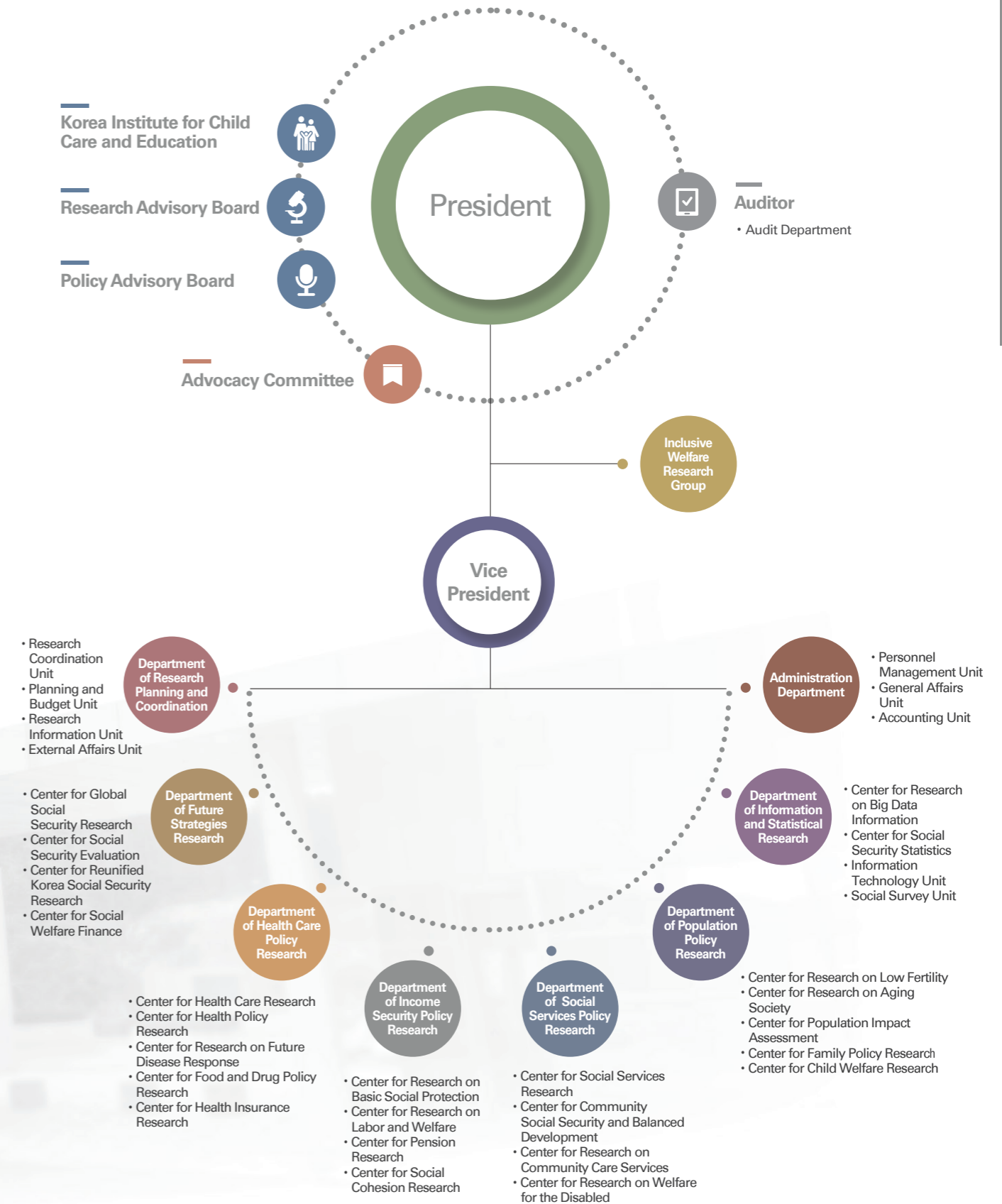
2017

- Named for two consecutive years as Best Institute in the "Human Resources and Public Policy" category

2018

- Heung-Seek Cho inaugurated as 13th President
- Established Inclusive Welfare Research Group

KIHASA is built on the belief that robust research evidence will lead to better policy decisions and performance and, in turn, to improved living standards. Thus KIHASA's two-fold mission: providing empirical and analytical bases for short- to long-term policymaking and promoting the public's understanding of policy issues concerning their health and welfare.





Department of Research Planning and Coordination

The Department of Research Planning and Coordination goes a great length to ensure the quality of every research project, from its beginning until it culminates in publication. The Department is responsible also for the planning and managing of KIHASA's management goals, budgeting, external affairs and public relations.



Research Coordination Unit

Planning of management goals and action plan of management goals / Short-to long-term planning for research and management / Coordination and management of research projects and employee evaluation / Evaluation of organizational performance / Publishing / Assistance in English editing and English translation

Planning and Budget Unit

Budget allocation / Management of research contract
Revenue management and expenditure

Research Information Unit

Archiving of research outcomes and materials / Management of organizational capitals and resources / Editorial assistance and verification of research ethics issues

External Affairs Unit

Publicity of research findings / Press response and external cooperation
Technical exchanges and cooperation with foreign organizations





Department of Future Strategies Research

What should we as a leading social policy think tank do to prepare for the future of social protection? This is the overarching question that guides the Department of Future Strategies Research. KIHASA researchers at the Department live and breathe ways to safeguard the sustainability of welfare state, closely examining changes in socioeconomic and political circumstances in and outside Korea. The Department is committed also to international joint research in social protection and to seeking ways to promote South-North cooperation in social security.

Center for Global Social Security Research

Strategies for the future of social protection / Regional studies on social protection / International comparison of social policies in Asian countries/ Publishing of Global Social Security Review Quarterly / Databases on social protection programs in other countries / International joint research and assistance therein / Design and evaluation of ODA projects

Center for Social Security Evaluation

Design of social security evaluation / Establishment of databases on social security evaluation / Assessment of the National Social Security Master Plan and social security programs / Ways to improve the assessment-based social security system / Management of social security performance / Social security expenditure and cost analysis / Social security regulations

Center for Reunified Korea Social Security Research

Plans for materializing a unified social security system for both Koreas / Comparison of social security in South and North Korea / Research on the real condition of North Korean defectors and supporting settlement / Unified social security models and their budgets / Establishment of a database on North Korean social security / Establishment of a database on social security in foreign cases of national reunification

Center for Social Welfare Finance

Mid- to long-term social security projection models / Carrying out social expenditure projections as specified in the Framework Act on Social Security / Social security expenditure projections and evaluation / Impact and financing of social security expenditure / Role division between the central and local governments in financing social security / International comparison of social expenditure trends



Department of Health Care Policy Research

Health is pivotal to national competitiveness as well as to people's quality of life. At the Department of Health Care Policy Research, we examine and identify people's health levels and factors affecting them, seeking effective health policy options that meet the changing and varied healthcare demands of the people now and in the future. At the Department, KIHASA researchers also actively take part in the planning of mid- and long-term strategies for health care improvement.

Center for Health Care Research

Health care delivery and primary care / Health care resources / Public health care / Emergency care / Investment in the medical industry / National health safety, including patient safety / Other various health care issues

Center for Health Policy Research

National health promotion policy and programs / Mid- to long-term improvement strategies for, and assessment of, the National Health Promotion Project / Survey and research on disease prevention and management / Local-level health projects and policies / Survey and analysis of psychosocial health issues and their causes / Health impact assessment

Center for Research on Future Disease Response

Surveillance and management of infectious diseases; preparation for resurgence of infectious diseases; response to public health risks / Future disease risk factors including climate change and fine dust / Inoculation and vaccine supply / One Health programs: interdisciplinary effort to promote health for people, animals and the environment / Establishment of interministerial cooperative mechanisms in response to future disease risks



Center for Food and Drug Policy Research

Policies on the hygiene and safety of foods and nutraceuticals / Policies on the food industry / Policies on pharmaceutical market, demand, and supply / Policies on pharmaceutical safety management and regulations / Policies on medical technologies, medical devices and cosmetics

Center for Health Insurance Research

Improvement and assessment of the National Health Insurance / Improvement and assessment of Medical Aid / Policy on increasing the coverage of the National Health Insurance / Financing, and increasing the efficiency, of the National Health Insurance / Optimal reimbursement for health care providers / Various health coverage issues





Department of Income Security Policy Research

KIHASA's concern at the Department of Income Security Policy Research is how policy interventions should be implemented to protect and steady people's income and raise their living standards. With this in mind, the Department makes it its business to understand how poverty and inequalities come about and change over time and to find ways to reduce them.

Center for Research on Basic Social Protection

Income protection programs, including public assistance / Income protection programs for socially underprivileged groups / Poverty and income inequality / Effectiveness of cash and in-kind assistance / Korea Welfare Panel Study

Center for Research on Labor and Welfare

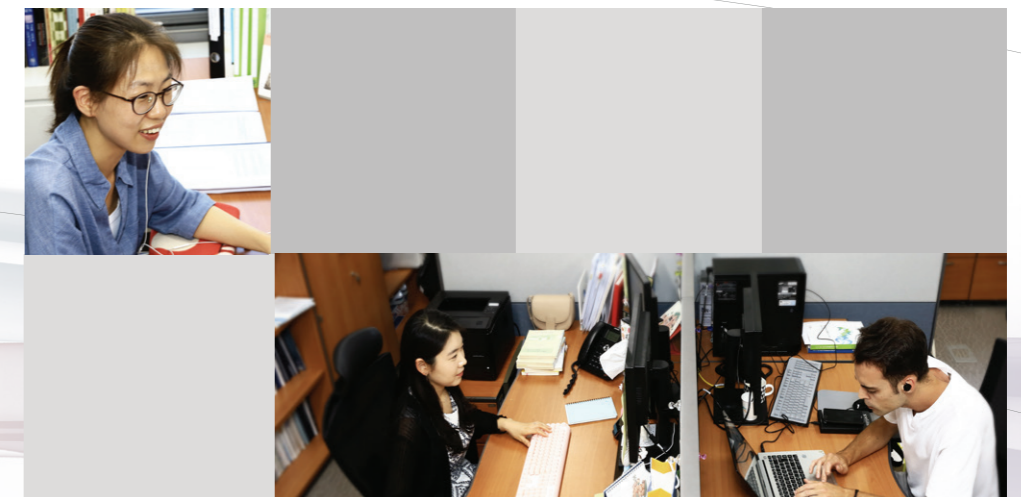
Living conditions and employment status of working-age low-income people / Ways to improve self-reliance support / Policies on income protection and employment support for economically active low-income people / Social economy, its role, and policy options to support it / Integrative policy approaches to welfare and employment

Center for Pension Research

Policy options to improve public pension schemes / Multi-tier post-retirement income protection programs for socially vulnerable groups / Policy instruments to improve the operation and financing of the National Pension Fund in preparation for mid- to long-term socioeconomic changes / Income protection programs for economically inactive groups

Center for Social Cohesion Research

Survey and research on social cohesion and social conflict / Development of indicators for social cohesion and social conflict / Policy options for increasing social cohesion and reducing social conflict / Establishment and operation of Social Cohesion Expert Network





Department of Social Services Policy Research

Essential social services are a necessity in helping people maintain a decent standard of living over the life cycle. The Department is committed to making our society one where children are well protected and cared for, community-based care is readily available for seniors, and a sufficient level of social support is guaranteed as a right to people having difficulty living on their own. Other areas of research interest for the Department include the management and service delivery of social protection programs.

Center for Social Services Research

Survey of social services supply and demand and management of social service programs / Delivery and governance of social services / Jobs creation and human resources support in the social services sector / Promotion of the third sector, social economy and social enterprises / Assessment of the quality of social services / Miscellaneous social service programs

Center for Community Social Security and Balanced Development

Progress in local-level social security / Provision of support in the planning and implementation of local-level social security programs and assessment thereof / Development and measurement of indicators for local-level social security / Public and private delivery of local-level social security / Assessment and monitoring of the Community Social Service Investment Program / Governance of local-level social security / Policy options for improving local-level social security

Center for Research on Community Care Services

Community-based care provision / Supply and demand of community-based care / Establishment of community care resources and infrastructure / Governance of community care services

Center for Research on Welfare for the Disabled

Survey and database of people with disabilities / Establishment and assessment of mid-to long-term plans for people with disabilities (including the Comprehensive Policy Plan for People with Disabilities) / Assessment of policies on people with disabilities / Policies on people with disabilities over life-cycle / Policies on women with disabilities; policies on people with severe disabilities / International comparison of policies on the disabled / Various policy options to promote the rights and self-reliance of people with disabilities



Department of Population Policy Research

KIHASA's research on population is multifaceted and multilayered, designed to look into such features of demographic dynamics as low fertility and population aging and to project how further population changes will play out over time. Based on our rigorous analysis of the relationship between demographic changes and various social phenomena, we develop a wide array of social welfare policy options and life-course approaches to social policies.

Center for Research on Low Fertility

National strategies for responding to low fertility / Planning of mid- and long-term policies on low fertility in collaboration with ministries concerned / Survey and analysis of fertility and nuptiality / Life-cycle-based policy responses to low fertility / International comparison of population issues / Interdisciplinary research on population and low fertility / Family policies and family support programs in times of rapid population changes

Center for Research on Aging Society

National strategies for responding to population aging / Planning of mid- and long-term policies on population aging in collaboration with ministries concerned / Survey and data analysis on population aging and long-term care / Development of indicators on population aging / International comparison of population aging and long-term care programs / Interdisciplinary research on population and population aging / Assessment of policies on aging society and of long-term care programs

Center for Population Impact Assessment

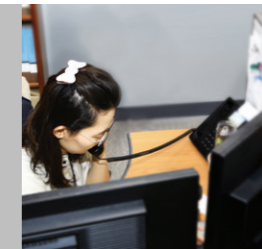
Population and households projections; production of raw and refined data on the population / Changes and trends in the population structure and population distribution / Endogenous and exogenous factors in population dynamics, their relationships and their socioeconomic impact / Short- and long-term demographic effect of policies on low-fertility and population aging / Education of the public on low fertility and population aging / Assessment of the performance of the Basic Plan on Low Fertility and Aging Society

Center for Family Policy Research

Status and awareness surveys of family formation and family life cycle / Family diversity and customized family policies for diverse families including socially disadvantaged and at-risk families / Family-friendly culture and institutions (formation of a gender-equal family and social culture) / International comparison of family policies / Assessment of family policies

Center for Child Welfare Research

Planning, formation and assessment of policies on children / The Institutional framework and infrastructure for the implementation of policies on children / Protection of and support for at-risk children / Child safety / Status and awareness surveys of children and analysis of policies on children



Department of Information and Statistical Research

The Department produces statistics and data with which to analyze the present state of, and the future outlook for, social security. Researchers at the Department explore diverse social statistical trends to evaluate ongoing policies and work out policy options for the future. We are keenly interested in strengthening our data management functions, especially of data linkage and integration, with a view to better serving a wide range of research needs.



Center for Research on Big Data Information

Data integration and linkage / Sampling, quality control and standardization of survey data / Policy instruments to promote the use of cutting-edge statistical approaches / Big data analysis of health and welfare policy issues / Strategies for the digitization of health care and social welfare / Protection of personal health and welfare information / Convergence of information technologies with health and welfare

Center for Social Security Statistics

Establishment of databases for central and local government administrative bodies / Selecting and managing of social security indicators / Establishment of the basis for producing new necessary social security statistics / Improving the management of social security statistics production / Support for Social Security Statistics Expert Committee / Analysis of social policies via improved social security statistics / Production of statistics for international organizations (WHO, OECD, UN, etc.) and international comparison of social security statistics

Information Technology Unit

Planning and managing digitization projects / Information security / Operation and maintenance of the in-house IT infrastructure / Planning and maintenance of the KIHASA website / Provision of support in the digitization of research projects / Development of IT convergence services



Social Survey Unit

Planning activities concerning survey budgeting, survey scheduling, etc. / Recruiting and managing surveyors / Implementation of various types of surveys, including face-to-face surveys / Verification of survey findings / Quality analysis and control of surveys / Editing of cleaning of survey data / Transferring and managing of survey data





Administration Department

The Administration Department is there to keep KIHASA's working environment as comfortable and productive as it can be for its researchers, relieving them from administrative and logistics work.



Personnel Management Unit

Personnel and employment management / Management of organizational regulations / Employee compensation and benefits

General Affairs Unit

Purchases, construction, repair, contract / Facility and equipment management / Event planning and support / In-house security and emergency response planning

Accounting Unit

Overall budget execution and accounting / Management of organizational expenses





Inclusive Welfare Research Group

The Research Group carries out evaluative studies on Inclusive Growth and Inclusive Welfare, the flagship of the current government's social welfare policies. The question of what policy steps should be taken in response to the changing industrial structure is the Research Group's guiding thread that runs through many of the convergent studies that we at KIHASA conduct on health and welfare.

- Convergent research on policies for the health and social welfare
- Assessment and research on policies concerning welfare state
- Surveys of and research on policies on health and social welfare as preparation for the future
- Establishment and operation of a network of health and social welfare experts

		Department of Research Planning and Coordination T. +82-44-287-8184		
	Department of Health Care Policy Research T. +82-44-287-8266	Administration Department T. +82-44-287-8342	Department of Income Security Policy Research T. +82-44-287-8200	
Department of Social Services Policy Research T. +82-44-287-8230		Department of Population Policy Research T. +82-44-287-8406		Department of Information and Statistical Research T. +82-44-287-8231
		Department of Future Strategies Research T. +82-44-287-8119	Inclusive Welfare Research Group T. +82-44-287-8233	

International cooperation

Europe

- University of Oxford
- Nordic Center for Welfare and Social Issues, Nordic Council of Ministers
- German Federal Institute for Population Research
- Institut National D'Etudes Demographiques
- Department of Social Policy and Social Work, University of York

Asia

- Chinese Academy of Social Sciences
- School of Nursing, Yanbian University
- National Institute of Public Health of Japan
- Institute of Population Research, Peking University
- China Health Economics Institute
- Policy Research Center, Ministry of Civil Affairs of the People's Republic of China
- Institute of Korean Peninsula Studies, Yanbian University
- Institute for Population and Social Research, Mahidol University in Thailand
- National Institute of Population and Social Security Research
- National University of Singapore Faculty of Arts and Social Sciences
- Urban Research Plaza, Osaka City University
- Thailand Development Research Institute
- School of Social Development and Public Policy, Beijing Normal University
- Thammasat University Faculty of Nursing

Oceania

- Center for Policy Studies, University of Victoria

In a world going global, KIHASA has actively forged research partnerships and worked with many research organizations and academic institutions around the world.

United States

- East-West Center, Honolulu Hawaii
- Population Research Center, The University of Texas at Austin
- National Opinion Research Center, University of Chicago
- UCLA California Center for Population Research
- ISSR Data Archive, University of California at Los Angeles
- UCLA Center for Health Policy Research
- Oregon State University
- Center for the Economics and Demography of Aging, University of California at Berkeley
- Center for Korean Studies, University of Hawaii at Manoa
- University of Utah
- RAND Corporation



A social policy breeding ground keeping in close communication with the public

KIHASA is a national think tank affiliated with the Office of Prime Minister. Conceived in 1971 as the Korea Institute for Family Planning, KIHASA today has close to two hundred researchers. For your reference, The Hankyung Business, a Korean weekly magazine of repute, has ranked KIHASA #1 on its survey-based list of “100 think tanks in the area of political and social sciences.”



대한민국 100대 싱크탱크

정치·사회 부문

순위	연구소	대표	설립연도	연구 영역
1	한국보건사회연구원	김기현	1971년	보건 의료, 건강 증진, 사회보장, 기초보장, 복지 서비스, 저출산 고령사회, 보건 사회동계
2	한국개발연구원	김영수	1961년	북한 고지, 산업, 국제 개발, 북한, 북한, 북한, 북한, 북한
3	한국교육개발원	김기현	1971년	교육정책, 교육, 교육, 교육, 교육, 교육, 교육, 교육
4	한국농촌경제연구원	김기현	1971년	농업정책, 농업, 농업, 농업, 농업, 농업, 농업, 농업

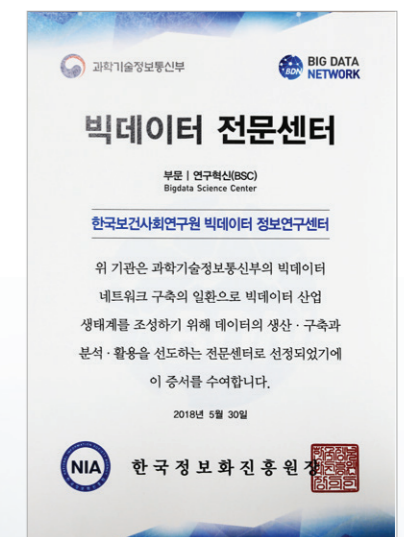
Building and sharing evidence to advance social policy

KIHASA produces highly reliable statistics and indicators on health and welfare, and delivers them to the government, decision-makers, the academia, international organizations, and the public. In our effort to improve the management of health and welfare statistics, we work with various research groups from home and abroad. We manage panel surveys and other surveys in an integrated manner. In addition, we actively support, with our wide-ranging databases, not only in-house projects, but also those conducted by outside researchers and organizations

Looking forward into the future, assisting with policy analysis

In May 2018, KIHASA was designated by the Ministry of Science and ICT as one of its Big Data Science Centers, whose role, as part of the Ministry's Big Data Network, is to contribute to the fostering of a Big Data industry ecosystem. With this function added, KIHASA makes use of AI and structured and unstructured data in its policy analysis and socioeconomic outlooks. In particular, we:

- make use of cutting-edge statistical techniques, including machine learning-based big data prediction models and anomaly detection methods, in research on health and welfare;
- examine and evaluate the public's awareness of the impact of social policies, by employing unstructured Big Data analytics, and present the findings for use in policymaking; and
- produce and maintain survey data for use in policymaking on low fertility, the elderly, the disabled, social welfare, and health care.



Generating and sharing data to assist in health and welfare policymaking

KIHASA conducts a wide range of surveys to produce basic statistics in the areas of health care, social welfare and population. The collected micro-data are provided to outside researchers for various research purposes.

▶ **Korea Welfare Panel** (<https://www.koweps.re.kr:442>)



The Korea Institute for Health and Social Affairs (KIHASA) and Seoul National University (SNU) together embarked on the Korea Welfare Panel Study in 2006. The Panel is a rich source of information on the dynamics of the populations in poverty, near-poverty, and working poverty and of their needs over the life-course.

▶ **Korea Health Panel** (<https://www.khp.re.kr:444>)



Since 2008, KIHASA and the National Health Insurance Service have jointly carried out the Korea Health Panel Survey to generate basic data on individual health behaviors, health levels, health service use, and healthcare expenditures.

Micro-data surveys

Survey title	Survey year(s)
Survey of Korean Overseas Adoptees	2013
Survey of Elder Abuse	2009
Survey of the Living Conditions of the Elderly	2017, 2014, 2011, 2008, 2004, 1998, 1994
Survey of the Reproductive Health of Unmarried Women	2014
Survey of the Wage Levels and Working Conditions of Those Employed by Social Welfare Centers	2011
Survey of Infant and Maternal Mortality	2008, 2007
Survey of Dementia Care in Korea	1997
Survey of Preconception Preparation and Childbirth	2013
Survey of the Living Conditions of People with Disabilities	2014, 2011, 2008, 2005, 2000
Survey of the Status of Self-Reliance Programs	2004, 2003, 2002
Survey of the Welfare Needs of the Self-Employed	2012
National Survey of Marriage and Birth Rates	2009, 2005
National Survey of the Needs of the Elderly for Long-Term Care Services	2001
National Survey of Multicultural Families	2009
National Survey of Fertility and Family Health and Welfare	2015, 2012, 2009, 2006, 2003, 2000, 1997, 1994, 1991
Survey of the Living Conditions and Welfare Needs of Middle-Aged Adults	2010
Survey of the Living Conditions of the Near-Poor	2007, 2004
Survey of Psychosocial Anxiety in Korea	2015
Survey of Patients	2016, 2015, 2014, 2013, 2012, 2011, 2010, 2009, 2008, 2005, 2002, 1999, 1996
Survey of Public Awareness of Social Cohesion and National Happiness	2014
Survey of Social Mobility and Social Cohesion	2015
Survey of Homeless Persons 2016	2016

Information sharing online

The websites we run at KIHASA are go-to knowledge storehouses for online visitors interested in health and welfare issues.

Health Impact Assessment Information Portal (<http://hia.kihasa.re.kr>)



The Health Impact Assessment Portal provides up-to-date information in PDF and e-book formats on the latest developments in health impact assessment in selected countries, including Korea.

The Health and Welfare Data Portal (<http://data.kihasa.re.kr>) provides:



- database of meta-information about KIHASA's past and ongoing research projects, with an option to browse by topics, life-course stages, or keywords;
- a repository of macro and micro data and meta-information, with an option to browse by topics and types
- information and statistics on major health and welfare indicators
- spatial data and statistics
- micro and macro data that comes from international organizations
- infographics about health and welfare statistics

Korea Institute for Health and Social Affairs
(<https://www.kihasa.re.kr/english/main.do>)

The KIHASA website provides access to the full text of KIHASA publications.

Library

KIHASA's library holds a large collection of professional publications and academic journals on health care, social welfare, social security, and population. It maintains around 50,000 volumes of monographs, research papers, dissertations, and conference proceedings, and a collection of 750 periodicals and hundreds of CD-ROM titles. The library maintains a mobile web-based system that provides access to information resources, and an open access repository that collects research publications for global use and permanent archiving. The library is open to anyone seeking information from its holdings and resources.

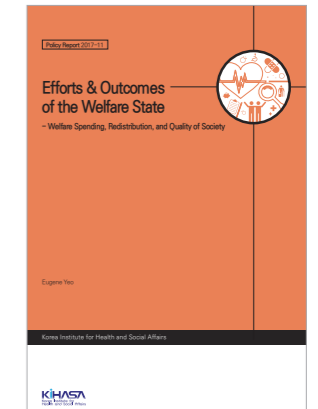
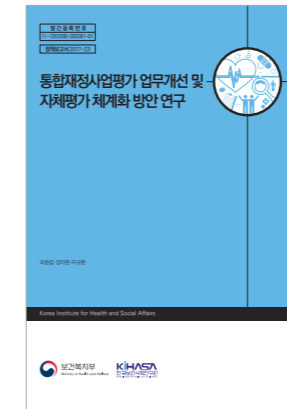
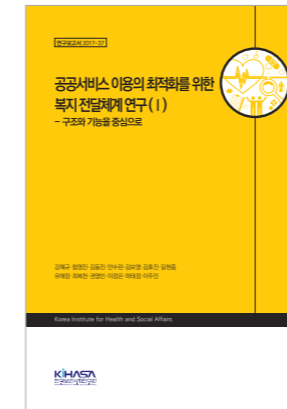
For more information, visit our electronic library (library.kihasa.re.kr) and open access repository (repository.kihasa.re.kr). For appointment and help, email us at library@kihasa.re.kr or call us at 044-287-8127.



Publications

Publications

Reports



Research Reports

Scientifically rigorous, *Research Reports* discuss policy issues and implications from various angles, serving as a contribution to the state of knowledge.

Policy Reports

Intended to contribute to informed decision-making, *Policy Reports* explore current policy issues and provide solutions that are highly relevant to policymakers.

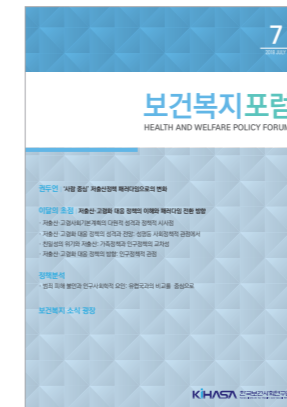
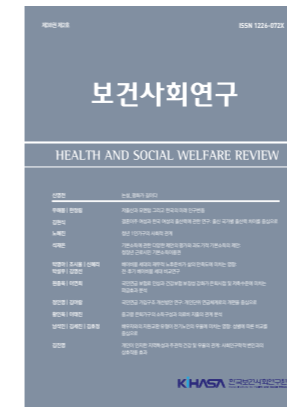
Policy Guides

Policy Guides focus on policy options in response to the needs of policymakers and the general public facing occasional social issues.

Policy Papers

Slim in form and pithy in substance, *Policy Papers* are a series of publications summarizing the key findings of KIHASA's research work in progress.

Periodicals



Health and Social Welfare Review

Health and Social Welfare Review is a KCI-accredited, quarterly academic journal that publishes theory-based and policy-relevant research in health care, social security, social welfare, low fertility, population aging, and statistics on health and welfare.

Health and Welfare Forum

Health and Welfare Forum is a monthly designed to share with readers the latest findings from KIHASA's current research projects.

Health and Welfare: Issue and Focus

Health and Welfare: Issue and Focus is a weekly bulletin that briefs readers on current issues in health and social welfare.

Global Social Security Review

Global Social Security Review is a quarterly that reports on social-policy goings-on around the world, offering implications that are of use to researchers, practitioners, and policymakers.

Location Map



Tel. +82-44-287-8000 | Fax. +82-44-287-8052

www.kihasa.re.kr/english/main.do

Building D, Sejong National Research Complex ,
370, Sicheong-daero,
Sejong-si, 30147, Korea

