

KIHASA



KOREA INSTITUTE FOR HEALTH AND SOCIAL AFFAIRS



The Sure Guide to Public Health and Social Welfare

Korea Institute for Health and Social Affairs

CONTENTS

Foreword	4
Historical Development of KIHASA	6
Objective	8
Functions	9
Organization	9
Research Activities	10
Other Activities	16

KIHASA will devote itself to an ever greater extent to the betterment of people's life and the economy as a whole by pulling together with academia, international organizations, non-governmental organizations and others



The Korea Institute for Health and Social Affairs (KIHASA) was launched in 1971 with the aim of contributing to national policy-making in health and welfare. To this end, KIHASA has been carrying out systematic studies covering a diverse range of areas— including public health, social welfare, social insurance, and population issues—to help decision-makers formulate evidence-based policy frameworks and thereby develop health and welfare systems that are highly responsive to the needs of people. KIHASA also supports and administers a number of government-initiated committees, fulfilling its role as a major think tank in the field of national health and welfare.

In this 21st century, where the principles of 'social solidarity' and 'individual quality of life' are inextricably linked to the improvement of national economy,

Korea faces the challenge of establishing improved health and social welfare infrastructure that can function not only as a means to raise every individual's health and welfare standards, but also as a basis for raising its national competitiveness. Meeting such a formidable challenge requires KIHASA to continuously conduct in-depth studies that combine rigorous socioeconomic analyses with extensive surveys on health and welfare needs. With this in mind, KIHASA will devote itself to an ever greater extent to the betterment of people's life and the economy as a whole by pulling together with academia, international organizations, non-governmental organizations and others.

Your continued concern, support, and encouragement will be essential to the success of this endeavor.

Thank you.

Soonil Bark, Ph.D.

President

● **Historical Development of KIHASA**

- Korea Institute for Family Planning (KIFP), established on July 1, 1971 (Law 2270).
- Korea Health Development Institute (KHDI), established on April 19, 1976 (Law 2857).
- Korea Institute for Population and Health (KIPH), formed through the merger of KIFP and KHDI (Law 3417) on July 1, 1981. The research functions of the Social Security Review Committee under the Ministry of Health and Welfare were transferred to KIPH in 1986.
- Korea Institute for Health and Social Affairs (KIHASA). The former KIPH was renamed KIHASA on December 30, 1989 (Law 4181) with its additional function of research in social security.
- Transferred on January 29, 1999 to the Office of State Affairs Coordination pursuant to the Law on the Establishment, Operation and Promotion of State-Sponsored Organizations (Law 5733).



● **Objective**

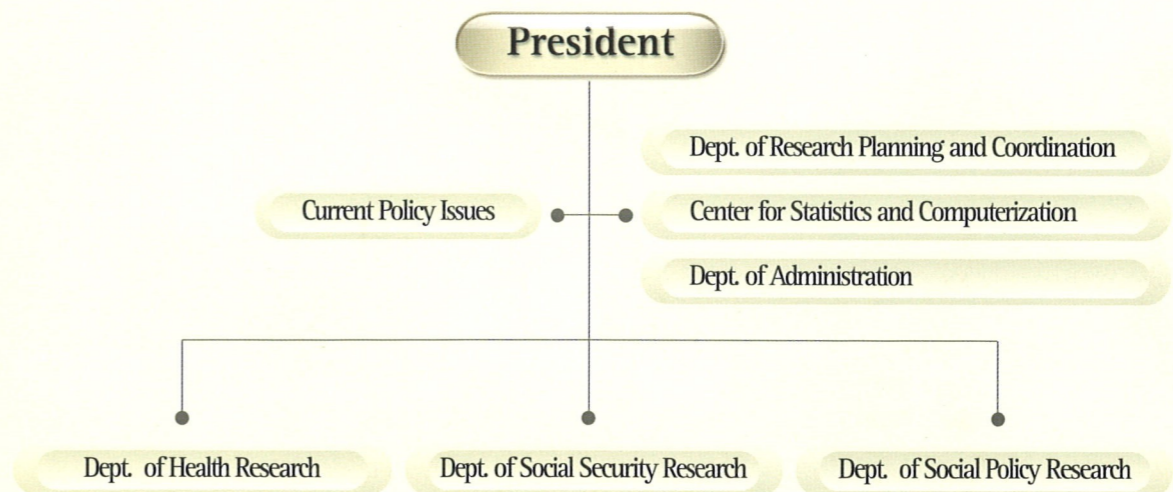
KIHASA strives to achieve improved quality of life for the Korean population by helping improve national health and welfare systems through research and evaluation of national policies and programs related to health care, social welfare, social insurance and population.

● **Functions**

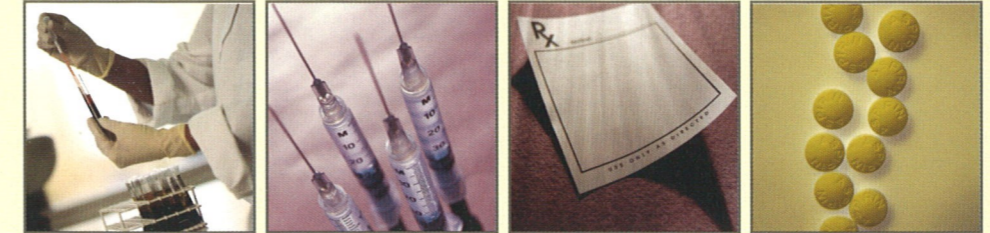
KIHASA's work spans exceptionally wide range of research areas.
For example we:

- » Study and evaluate the primary issues of national health services, health and medical industries, social insurance, social security, family welfare, and population.
- » Conduct joint research projects and active information exchange programs with domestic and international organizations through seminars and conferences.
- » Provide education and training programs to people at home and abroad.
- » Conduct national household surveys on areas of fertility, health and medical care of the disabled, the elderly and low-income earners.

● **Organization**



KIHASA consists of 6 departments, of which 4 are research-oriented. The four research departments comprise 17 research teams and centers. More than 140 full- and part-time staff members represent diversity in disciplines, expertise, and experience.



● Department of Health Research

Health Policy Research

- Develops and evaluates short- and long-term health policies
- Develops and evaluates healthcare delivery system
- Helps formulate healthcare policies and management system
- Works to improve disease prevention and control systems
- Conducts research on mental and reproductive health

Health Promotion Research

- Develops short- and long-term health promotion strategies
 - Conducts national health and nutrition surveys
 - Develops and evaluates health promotion programs

Food and Nutrition Research

- Develops food hygiene policies
- Helps improve food safety system
- Assesses national food policies
- Develops short- and long-term plans for the improvement of food administration
- Conducts research projects on public hygiene

Center for Health Promotion Development

- Conducts research on supply and demand for healthcare resources
- Conducts research on optimum management of healthcare resources
- Develops food and drug safety policy options
- Develops and conducts training programs for health promotion workers
- Develops short- and long-term strategies for improving health education
- Develops health education programs
- Operates health education information center



● **Department of Social Security Research**

Social Insurance Research

- Helps improve the social insurance system
- Develops policy guidelines to stabilize National Health Insurance finance
- Provides research-based recommendations to develop and update fee-for-service systems
- Conducts research on medical benefit system
- Provides policy options for the improvement of the National Pension Scheme
- Works to improve the operation and finance of the National Pension Fund
- Conducts research on other pension programs



Public Assistance Research

- Conduct research on social assistance and welfare administration
- Develops self-reliance programs to address the specific needs and characteristics of target groups
- Conducts research on the optimum level of earned income disregard to increase work incentives
- Assesses the efficiency of self-reliance support programs

Basic Security and Self-reliance Monitoring Center

- Estimates the minimum cost of living
- Monitors poverty status and income inequality
- Conducts studies on the efficiency of the National Basic Livelihood Security System

● **Department of Social Policy Research**

Population and Family Research

- Develops short- and long-term population projections
- Provides population policies
- Conducts research on family structure
- Develops strategies for family welfare
- Works to improve policies on women's welfare

New Population Research

- Conducts studies on family mores and funeral and burial system
- Conducts research on welfare administration and resources
- Develops and analyzes various public opinion surveys

Elderly Welfare Research

- Conducts surveys on the living conditions and needs of the elderly
- Evaluates welfare facilities and programs for the elderly
- Develops welfare and health programs for the elderly population



Disabled Welfare Research

- Conducts surveys on the living conditions and welfare needs of the disabled
- Develops short- and long-term policy options for the welfare of the disabled
- Evaluates welfare facilities and programs for the disabled
- Conducts studies for enhancing the efficiency of rehabilitation service



Center for Information and Statistics Research

Computer and Information

- Develops health and welfare database
- Conducts studies on health and welfare informatization
- Conducts data processing and provides data support for researchers
- Operates information network and homepage



Statistics Development

- Develops short- and long-term plans for health and welfare statistics generation
- Works to improve health and welfare statistical methods
- Collects, produces and analyzes statistics to support international organizations

Research and Statistics

- Conducts statistical research projects in the areas of health and welfare
- Establishes and manages crude data for statistical research

Other Activities

● Supporting Work for Policy Committees

Major policy committees are formed to deal with pressing issues of health and welfare in need of deliberate and effective resolutions. Committees focus on specific issues and holds in-depth discussions and forums until an effective measure or resolution is reached. Research fellows at KIHASA, scholars, and experts from related organizations are selected to review the policies and come up with new and reformed policy measures.

● Policy Forums

In association with academia, civic groups and government agencies, KIHASA regularly holds policy forums and hearings with a view to achieving policy objectives and to improving public understanding of government policies on health and welfare.

● International Cooperation

International Training Workshop on Healthcare

In collaboration with the Korea International Cooperation Agency (KOICA), KIHASA annually conducts the Workshop on Health Policy and Program Management for healthcare policy-makers and managers from developing countries.

Short-term Training in Health and Welfare

KIHASA, in association with such international organizations as WHO and UNFPA, carries out training programs for governmental and non-governmental officials concerned from developing countries.

APEC Social Safety Net Capacity Building Network

As the Health Institution of APEC Social Safety Net Capacity Building Network (SSN CBN), KIHASA provides administrative and coordination assistance for the network of 17 APEC member economies.

KIHASA Information and Research Collaboration

KIHASA endeavors to promote an open exchange of ideas, experiences and information on health and welfare among scholars and policy-makers from around the world and conduct joint research projects with a number of international organizations as follows: East-West Center (EWC), Hawaii; United Nations Population Fund (UNFPA); International Social Security Association (ISSA); National Institute of Population and Social Security Research (NIPSSR), Japan; National Institute of Public Health (NIPH), Japan; Taiwan Provincial Institute of Family Planning (TPIFP); World Health Organization (WHO); the World Bank (IBRD); Mahidol University (Thailand); and the Institute of Population and Labor Economics, Chinese Academy of Social Sciences (China).

● Health and Welfare Information Service

Library

KIHASA's library holds a large collection of professional publications and academic journals on health care, social welfare, social security, population and family planning. It holds a collection of more than 44,000 volumes of monographs, research papers, dissertations, theses and conference proceedings, and a collection of over 830 journals and 240 CD-ROM titles. The library also provides KIHASALINE, an Internet-based bibliographic database on health care, social welfare, social security and population of Korea. This database currently contains approximately 40,000 bibliographic records. KIHASA's library staff members provide information services, document delivery services, inter-library loan and instructions in the use of library and information sources to researchers, professors, graduate students and government officials.

Publications

KIHASA publishes research publications, working papers, and other research and seminar proceedings in addition to its semi-annual and monthly periodicals.

KIHASA

Korea Institute for Health and Social Affairs

Korea Institute for Health and Social Affairs will play a leading
role for the advancement of national health and welfare
through continuous studies and efforts





KIHASA

KOREA INSTITUTE FOR HEALTH AND SOCIAL AFFAIRS

San 42-14, Bulgwang-dong, Eunpyeong-gu Seoul 122-705, Republic of Korea

Fax : 82-2-352-2181, 352-9129 Tel : 82-2-355-8003~7, 389-0106

E-mail : kihasa@kihasa.re.kr URL : <http://www.kihasa.re.kr>